



# T8

## 34T8/COR/96-850/MF42/G/FA8 10/1

Our TLEDs are available in InstantFit (Type A / Type C) or MainsFit (Ballast bypass / Type B) versions. The InstantFit lamps work on a broad variety of ballasts and LED drivers. Only InstantFit has over 15,000 lamp & ballast combinations delivering even light output, energy savings and a long lifetime. Our MainsFit products feature a double-ended design, simplifying installation while a proprietary safety circuit minimizes a shock risk. Lamp sizes range from 2-foot to 8-foot and U-bend with a variety of lumen outputs.

### Product data

General Information	
Cap-Base	FA8 [ FA8]
EU RoHS compliant	Yes
Nominal Lifetime (Nom)	50000 h
Switching Cycle	50000X
Light Technical	
Color Code	850 [ CCT of 5000K]
Beam Angle (Nom)	240 °
Luminous Flux (Nom)	4200 lm
Color Designation	Daylight [ Daylight]
Correlated Color Temperature (Nom)	5000 K
Luminous Efficacy (rated) (Nom)	123.00 lm/W
Color Consistency	<5
Color Rendering Index (Nom)	82
LLMF At End Of Nominal Lifetime (Nom)	70 %
Operating and Electrical	
Input Frequency	50 to 60 Hz
Power (Rated) (Nom)	34 W

Lamp Current (Max)	290 mA
Lamp Current (Min)	133 mA
Starting Time (Nom)	0.5 s
Warm Up Time to 60% Light (Nom)	0.5 s
UL Type	Type B - bypass the ballast
Power Factor (Nom)	0.9
Voltage (Nom)	120-277 V
Temperature	
T-Ambient (Max)	45 °C
T-Ambient (Min)	-20 °C
T-Storage (Max)	65 °C
T-Storage (Min)	-40 °C
T-Case Maximum (Nom)	45 °C
Controls and Dimming	
Dimmable	No

**Mechanical and Housing**

Product Length 2400 mm

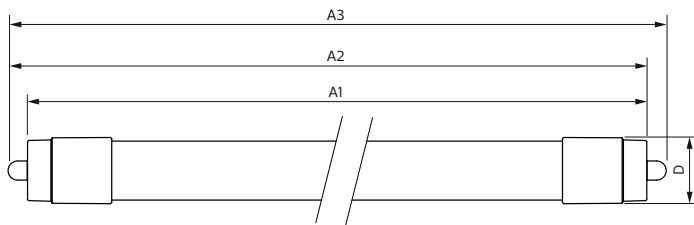
**Approval and Application**

Energy Efficiency Label (EEL) Not applicable  
 Energy Saving Product Yes  
 Approval Marks RoHS compliance UL certificate DLC compliance  
 Energy Consumption kWh/1000 h - kWh

**Product Data**

Order product name 34T8/COR/96-850/MF42/G/FA8 10/1  
 EAN/UPC - Product 046677545277  
 Order code 545277  
 Numerator - Quantity Per Pack 1  
 Numerator - Packs per outer box 10  
 Material Nr. (12NC) 929002014104  
 Net Weight (Piece) 0.740 kg

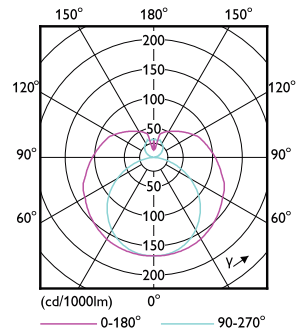
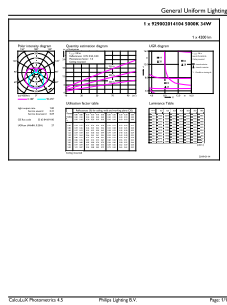
**Dimensional drawing**



Product	D1	D2	A1	A2	A3
34T8/COR/96-850/ MF42/G/FA8 10/1	28 mm	27.9 mm	2369.8 mm	2378.7 mm	2387.8 mm

**TLED MF CorePro 8ft 4200lm FA8 5000K**

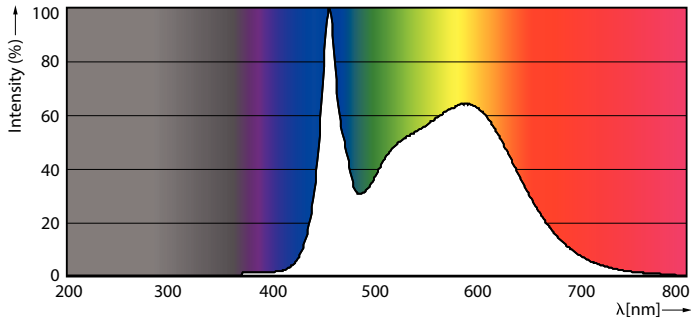
**Photometric data**



**LEDtube FA8 5000K 240D**

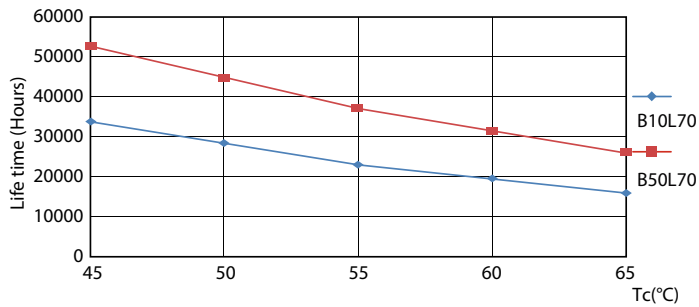
**LEDtube FA8 4000K 240D**

Photometric data

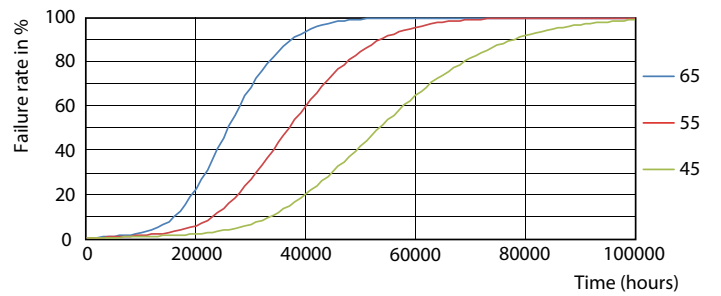


LEDtube FA8 5000K 240D

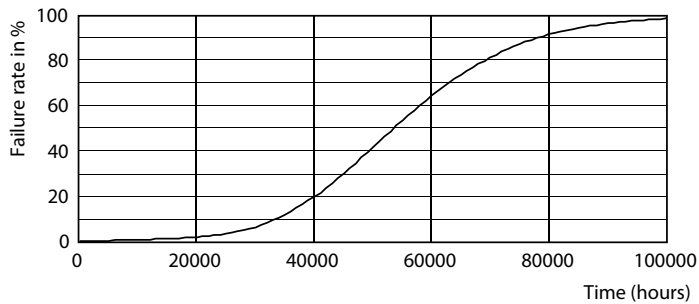
Lifetime



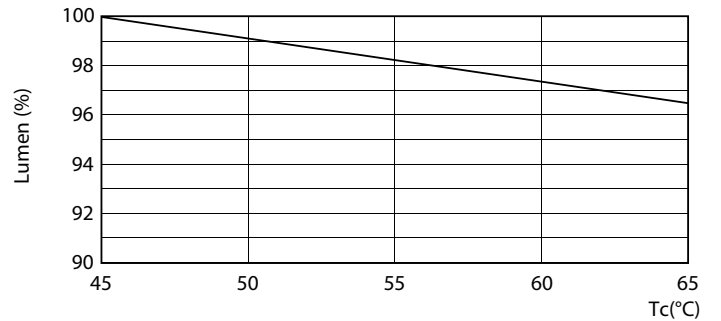
LEDtube FA8 4000K 240D LifetimeVsTc



LEDtube FA8 4000K 240D FailureRate



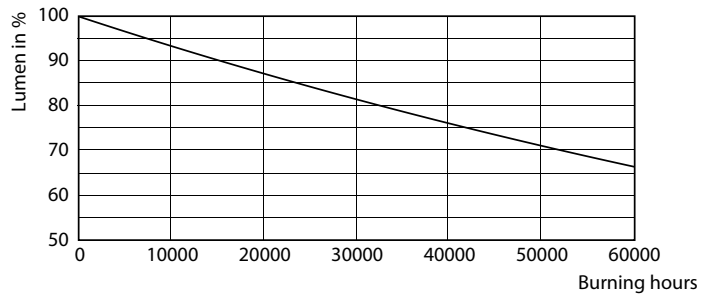
LEDtube FA8 4000K 240D



LEDtube FA8 4000K 240D LumenVsTc

# T8

## Lifetime



LEDtube FA8 4000K 240D

