



T8

8.5T8/COR/24-850/MF11/G 10/1

Our TLEDs are available in InstantFit (Type A / Type C) or MainsFit (Ballast bypass / Type B) versions. The InstantFit lamps work on a broad variety of ballasts and LED drivers. Only InstantFit has over 15,000 lamp & ballast combinations delivering even light output, energy savings and a long lifetime. Our MainsFit products feature a double-ended design, simplifying installation while a proprietary safety circuit minimizes a shock risk. Lamp sizes range from 2-foot to 8-foot and U-bend with a variety of lumen outputs.

Product data

General Information	
Cap-Base	G13 [Medium Bi-Pin Fluorescent]
EU RoHS compliant	Yes
Nominal Lifetime (Nom)	50000 h
Switching Cycle	50000X
Light Technical	
Color Code	850 [CCT of 5000K]
Beam Angle (Nom)	180 °
Luminous Flux (Nom)	1150 lm
Color Designation	Daylight [Daylight]
Correlated Color Temperature (Nom)	5000 K
Luminous Efficacy (rated) (Nom)	135.00 lm/W
Color Consistency	<5
Color Rendering Index (Nom)	82
LLMF At End Of Nominal Lifetime (Nom)	70 %
Operating and Electrical	
Input Frequency	50 to 60 Hz
Power (Rated) (Nom)	8.5 W

Lamp Current (Max)	75 mA
Lamp Current (Min)	36 mA
Starting Time (Nom)	0.9 s
Warm Up Time to 60% Light (Nom)	0.9 s
UL Type	Type B - bypass the ballast
Power Factor (Nom)	0.9
Voltage (Nom)	120-277 V
Temperature	
T-Ambient (Max)	45 °C
T-Ambient (Min)	-20 °C
T-Storage (Max)	65 °C
T-Storage (Min)	-40 °C
T-Case Maximum (Nom)	50 °C
Controls and Dimming	
Dimmable	No

T8

Mechanical and Housing

Product Length 600 mm

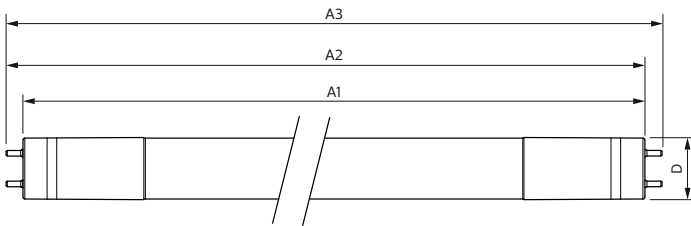
Approval and Application

Energy Efficiency Label (EEL) Not applicable
 Energy Saving Product Yes
 Approval Marks UL certificate RoHS compliance DLC compliance
 Energy Consumption kWh/1000 h - kWh
 Energy Certifications DLC Standard

Product Data

Order product name 8.5T8/COR/24-850/MF11/G 10/1
 EAN/UPC - Product 046677535483
 Order code 535484
 Numerator - Quantity Per Pack 1
 Numerator - Packs per outer box 10
 Material Nr. (12NC) 929001934104
 Net Weight (Piece) 0.200 kg

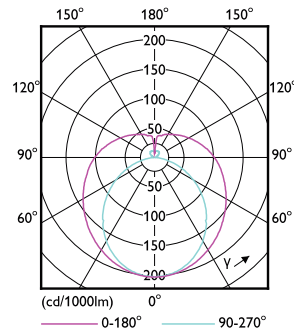
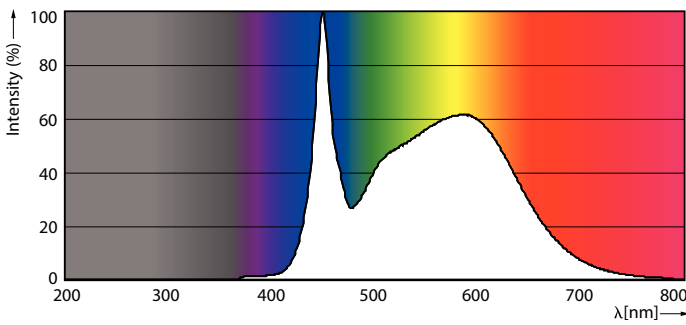
Dimensional drawing



Product	D	A1	A2	A3
8.5T8/COR/24-850/MF11/G 10/1	25.9 mm	589.5 mm	595.7 mm	604 mm

TLED MF CorePro 2ft 1100lm 5000K

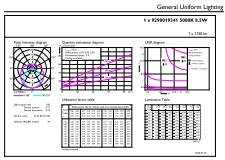
Photometric data



8-5W G13

8.5W G13 840

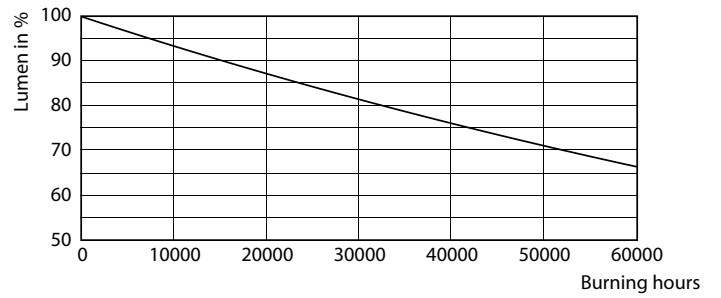
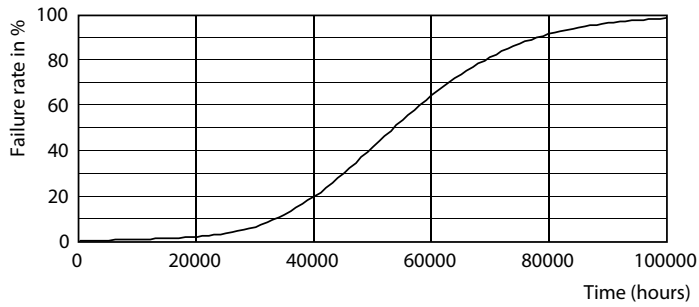
Photometric data



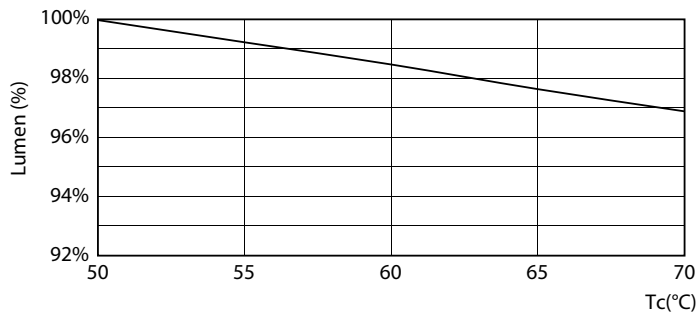
© 2020 Philips Lighting B.V. Page 11

8-5W G13 850 5000K

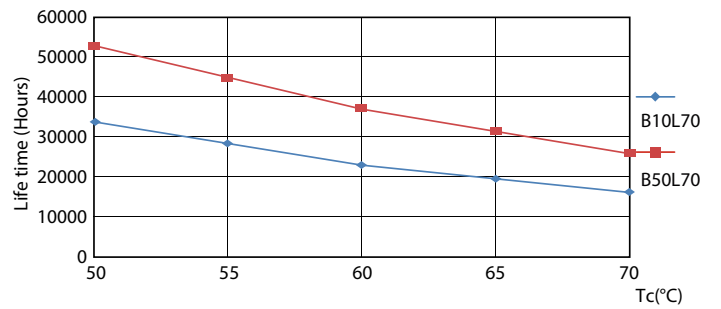
Lifetime



8.5W G13



8.5W G13

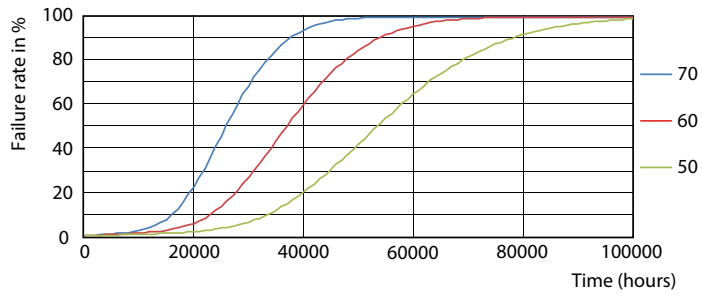


8.5W G13

8.5W G13

T8

Lifetime



8.5W G13

