



# T8

## 12T8/MAS/48-835/MF17/G 10/1

Our TLEDs are available in InstantFit (Type A / Type C) or MainsFit (Ballast bypass / Type B) versions. The InstantFit lamps work on a broad variety of ballasts and LED drivers. Only InstantFit has over 15,000 lamp & ballast combinations delivering even light output, energy savings and a long lifetime. Our MainsFit products feature a double-ended design, simplifying installation while a proprietary safety circuit minimizes a shock risk. Lamp sizes range from 2-foot to 8-foot and U-bend with a variety of lumen outputs.

### Product data

General Information	
Cap-Base	G13 [ Medium Bi-Pin Fluorescent]
EU RoHS compliant	Yes
Nominal Lifetime (Nom)	50000 h
Switching Cycle	50000X
Light Technical	
Color Code	835 [ CCT of 3500K]
Beam Angle (Nom)	240 °
Luminous Flux (Nom)	1700 lm
Color Designation	White (WH)
Correlated Color Temperature (Nom)	3500 K
Luminous Efficacy (rated) (Nom)	141.00 lm/W
Color Consistency	<6
Color Rendering Index (Nom)	80
LLMF At End Of Nominal Lifetime (Nom)	70 %
Operating and Electrical	
Input Frequency	50 to 60 Hz
Power (Rated) (Nom)	12 W

Lamp Current (Max)	120 mA
Lamp Current (Min)	40 mA
Starting Time (Nom)	0.5 s
Warm Up Time to 60% Light (Nom)	0.5 s
UL Type	Type B - bypass the ballast
Power Factor (Nom)	0.9
Voltage (Nom)	120-277 V
Temperature	
T-Ambient (Max)	45 °C
T-Ambient (Min)	-20 °C
T-Storage (Max)	65 °C
T-Storage (Min)	-40 °C
T-Case Maximum (Nom)	70 °C
Controls and Dimming	
Dimmable	No

**Mechanical and Housing**

Product Length	1200 mm
<b>Approval and Application</b>	
Energy Efficiency Label (EEL)	Not applicable
Energy Saving Product	Yes
Approval Marks	RoHS compliance UL certificate DLC compliance
Energy Consumption kWh/1000 h	- kWh

**Product Data**

Order product name	12T8/MAS/48-835/MF17/G 10/1
EAN/UPC - Product	046677532680
Order code	532689
Numerator - Quantity Per Pack	1
Numerator - Packs per outer box	10
Material Nr. (12NC)	929001876934
Net Weight (Piece)	0.215 kg

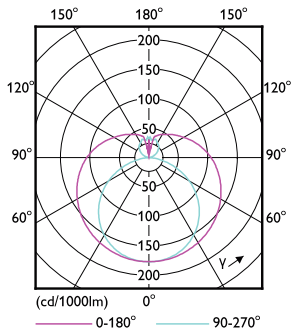
**Dimensional drawing**

A3

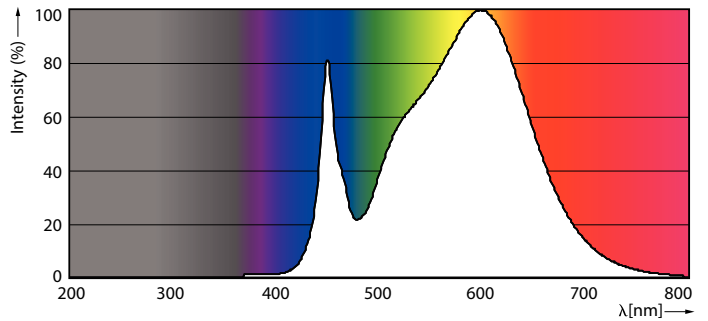
Product	D1	D2	A1	A2	A3
12T8/MAS/48-835/MF17/G 10/1	25.7 mm	28 mm	1198 mm	1205 mm	1212 mm

**Performance TypeB 1800lm 12W**

**Photometric data**

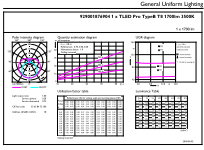


**LEDtube PRO 12W G13 830 24D ND**



**LEDtube PRO 12W G13 835 24D ND**

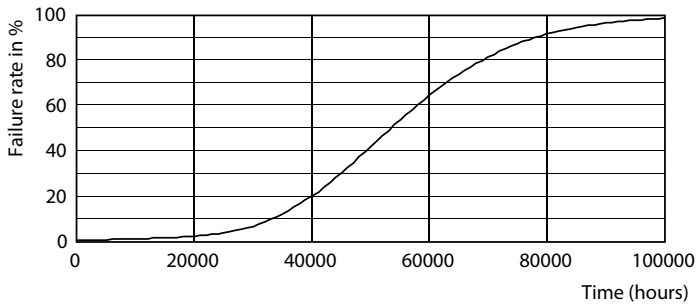
Photometric data



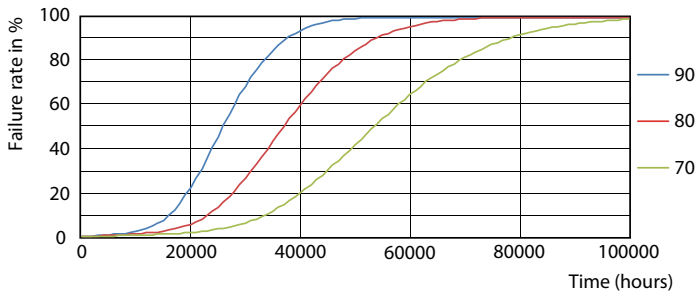
Technical Parameters 43 Page 10

LEDtube PRO 12W G13 835 24D ND

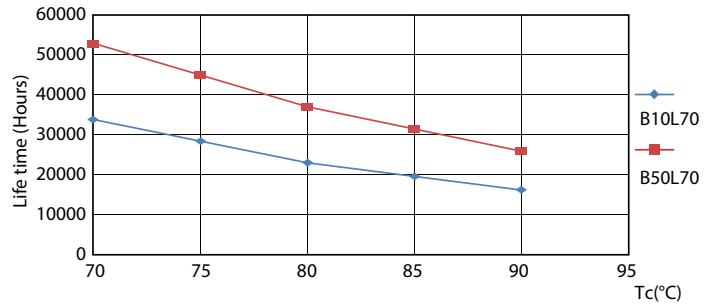
Lifetime



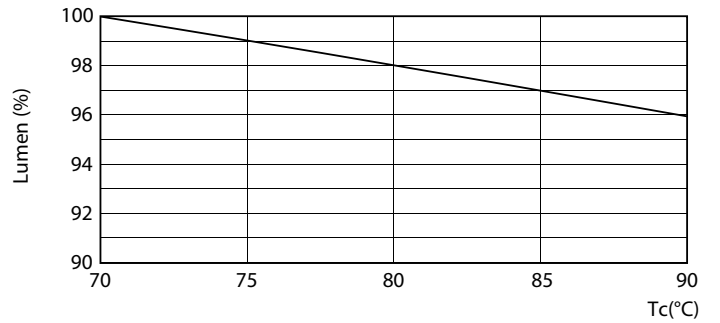
LEDtube PRO 12W G13 830 24D ND



LEDtube PRO 12W G13 830 24D ND



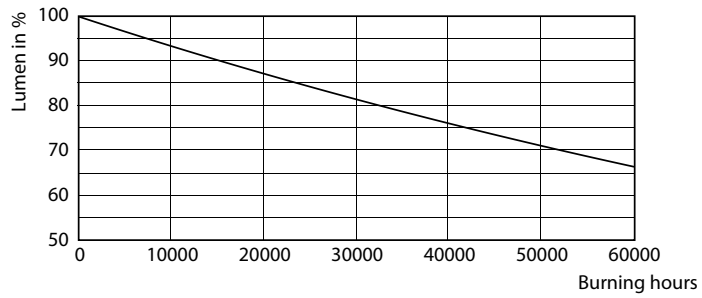
LEDtube PRO 12W G13 830 24D ND



LEDtube PRO 12W G13 830 24D ND

# T8

## Lifetime



LEDtube PRO 12W G13 830 24D ND

