



T5

11T5HE/34-830/IF14/G/DIM 10/1

Philips T5 LED tubes offer an affordable, energy saving retrofit solution. The T5 lamps have been engineered to withstand the test of time with a 50,000-hour lifetime and a limited 5-year warranty to back it up. The lighting performance effectively replaces conventional fluorescent T5 HO or T5 HE lamps. Available in either InstantFit (Type A or Type C) or MainsFit (Type B / Ballast bypass), Philips T5 TLEDs provide a variety of options for any application.

Product data

General Information	
Cap-Base	G5 [G5]
EU RoHS compliant	Yes
Nominal Lifetime (Nom)	50000 h
Switching Cycle	50000X
Light Technical	
Color Code	830 [CCT of 3000K]
Beam Angle (Nom)	200 °
Luminous Flux (Nom)	1400 lm
Color Designation	White (WH)
Correlated Color Temperature (Nom)	3000 K
Luminous Efficacy (rated) (Nom)	127.00 lm/W
Color Consistency	<6
Color Rendering Index (Nom)	82
LLMF At End Of Nominal Lifetime (Nom)	70 %
Operating and Electrical	
Input Frequency	40000-110000 Hz
Power (Rated) (Nom)	11 W
Lamp Current (Max)	400 mA

Lamp Current (Min)	60 mA
Starting Time (Nom)	0.5 s
Warm Up Time to 60% Light (Nom)	0.5 s
UL Type	Type A - works on ballast
Power Factor (Nom)	0.9
Voltage (Nom)	50-80 V
Temperature	
T-Ambient (Max)	45 °C
T-Ambient (Min)	-20 °C
T-Storage (Max)	65 °C
T-Storage (Min)	-40 °C
T-Case Maximum (Nom)	70 °C
Controls and Dimming	
Dimmable	Yes
Mechanical and Housing	
Product Length	900 mm

T5

Approval and Application

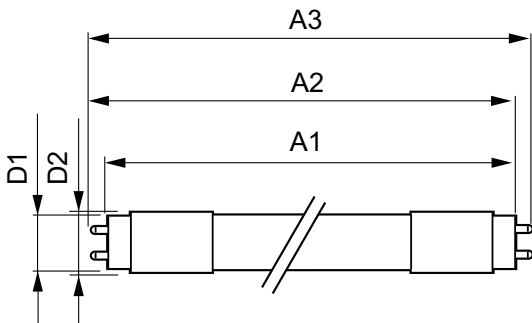
Energy Efficiency Label (EEL)	Not applicable
Energy Saving Product	Yes
Approval Marks	UL certificate RoHS compliance
Energy Consumption kWh/1000 h	- kWh

Product Data

Order product name	11T5HE/34-830/IF14/G/DIM 10/1
--------------------	-------------------------------

EAN/UPC - Product	046677476458
Order code	476457
Numerator - Quantity Per Pack	1
Numerator - Packs per outer box	10
Material Nr. (12NC)	929001823504
Net Weight (Piece)	0.110 kg

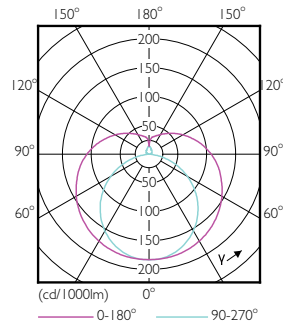
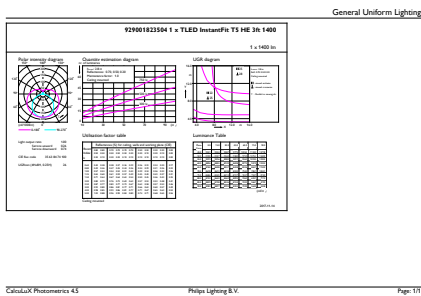
Dimensional drawing



TLED 900mm HFV11.5-21W 1500lm 3000K ND

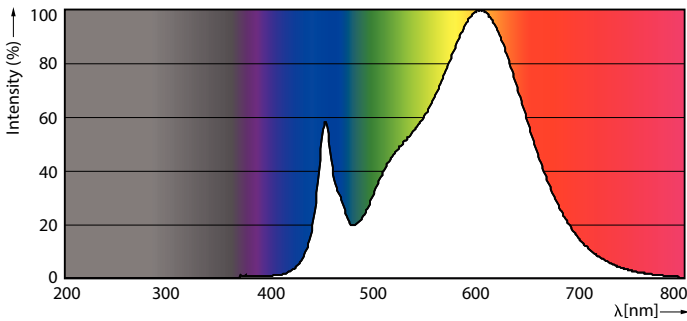
Product	D1	D2	A1	A2	A3
11T5HE/34-830/IF14/G/DIM 10/1	15.3 mm	18.4 mm	847.8 mm	854.9 mm	862 mm

Photometric data



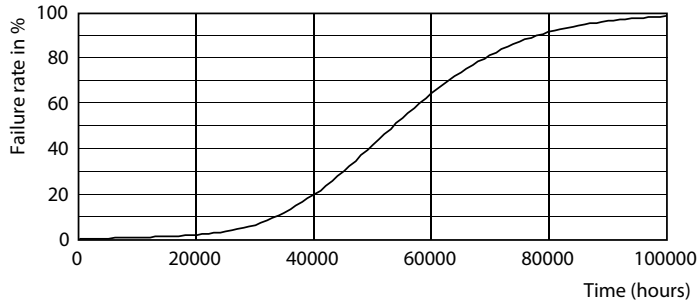
LEDtube 11W G5 830 200D DIM IF14

LEDtube 8W G5 830 200D DIM IF10

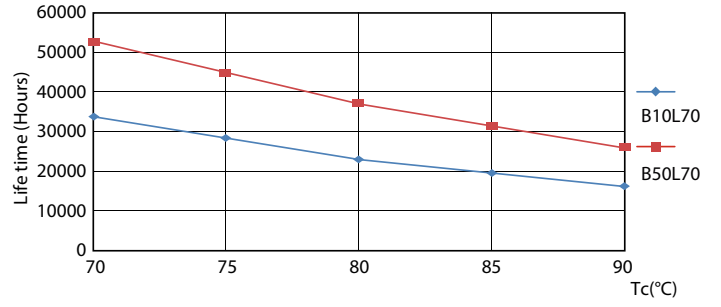


LEDtube 11W G5 830 200D DIM IF14

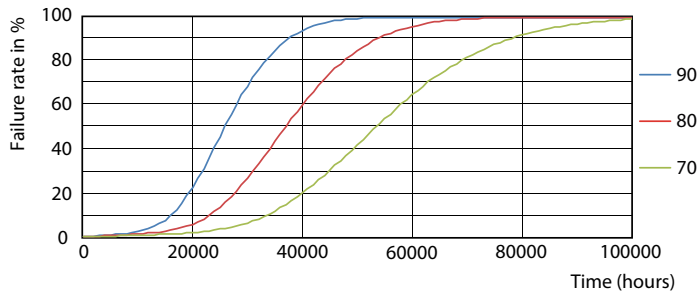
Lifetime



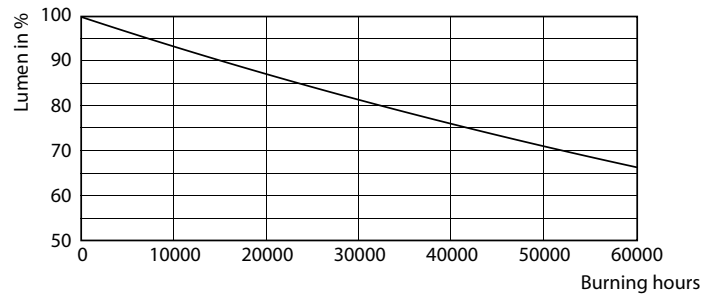
LEDtube 8-14W G5 830-850 200D DIM IF10-21



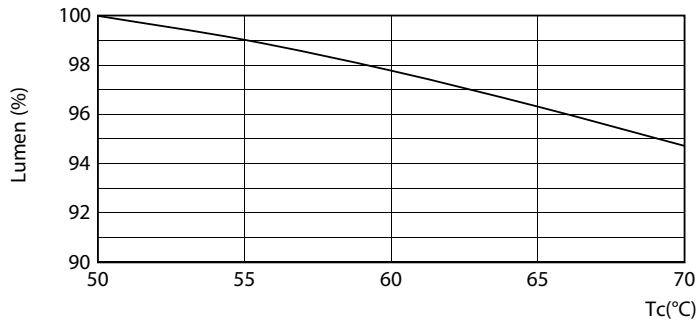
LEDtube 8-14W G5 830-850 200D DIM IF10-21



LEDtube 8-14W G5 830-850 200D DIM IF10-21



LEDtube 8-14W G5 830-850 200D DIM IF10-21



LEDtube 8-14W G5 830-850 200D DIM IF10-21

