



# T8

## 16.5T8/MAS/48-840/MF25/P/DIM 25/1

Our TLEDs are available in InstantFit (Type A / Type C) or MainsFit (Ballast bypass / Type B) versions. The InstantFit lamps work on a broad variety of ballasts and LED drivers. Only InstantFit has over 15,000 lamp & ballast combinations delivering even light output, energy savings and a long lifetime. Our MainsFit products feature a double-ended design, simplifying installation while a proprietary safety circuit minimizes a shock risk. Lamp sizes range from 2-foot to 8-foot and U-bend with a variety of lumen outputs.

### Product data

General information		Power (Rated) (Nom)	
Cap-Base	G13 [ Medium Bi-Pin Fluorescent]		16.5 W
EU RoHS compliant	Yes	Lamp Current (Max)	144 mA
Nominal Lifetime (Nom)	70000 h	Lamp Current (Min)	68 mA
Switching Cycle	50000X	Starting Time (Nom)	0.5 s
Tier	MasterClass	Warm Up Time to 60% Light (Nom)	0.5 s
Light technical		UL Type	TLED_Type B; UL classified double end
Color Code	841 [ CCT of 4100K (841)]	Power Factor (Nom)	0.9
Beam Angle (Nom)	180 °	Voltage (Nom)	120-277 V
Luminous Flux (Nom)	2500 lm	Temperature	
Color Designation	Cool White (CW)	T-Ambient (Max)	45 °C
Correlated Color Temperature (Nom)	4000 K	T-Ambient (Min)	-20 °C
Luminous Efficacy (rated) (Nom)	151.00 lm/W	T-Storage (Max)	65 °C
Color Consistency	6SCDM	T-Storage (Min)	-40 °C
Color Rendering Index (Nom)	80	T-Case Maximum (Nom)	70 °C
LLMF At End Of Nominal Lifetime (Nom)	70 %	Controls and dimming	
Operating and electrical		Dimmable	Only with specific dimmers
Input Frequency	50 to 60 Hz		

# T8

## Mechanical and housing

Bulb Finish	Frosted
Bulb Material	Plastic
Product Length	1200 mm
Bulb Shape	Tube, double-ended

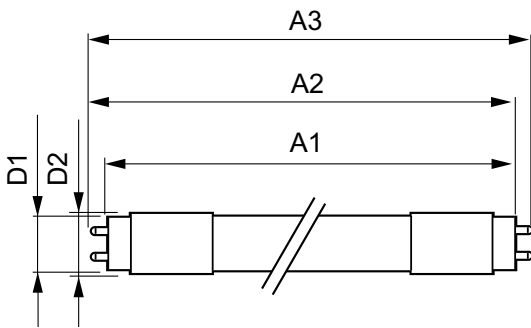
## Approval and application

Energy Saving Product	Yes
Approval Marks	RoHS compliance UL certificate DLC compliance

## Product data

Order product name	16.5T8/MAS/48-840/MF25/P/DIM 25/1
EAN/UPC - Product	046677579524
Order code	579524
Numerator - Quantity Per Pack	1
Numerator - Packs per outer box	25
Material Nr. (12NC)	929003525904
Net Weight (Piece)	0.210 kg

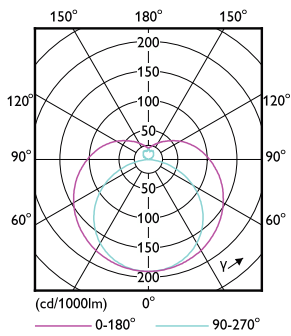
## Dimensional drawing



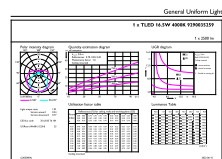
16.5T8/MAS/48-840/MF25/P/DIM 25/1

Product	D1	D2	A1	A2	A3
16.5T8/MAS/48-840/MF25/P/DIM 25/1	25.7 mm	28 mm	1198.2 mm	1205.3 mm	1212.4 mm

## Photometric data

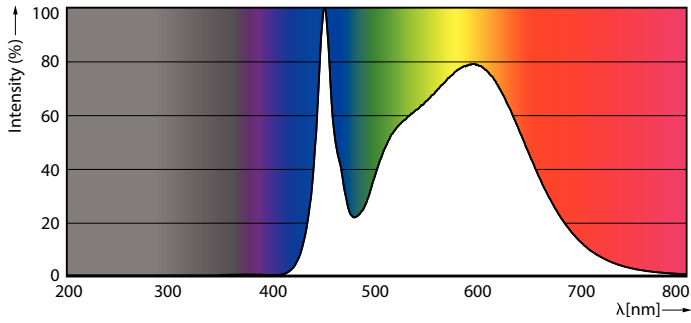


Light Distribution Diagram



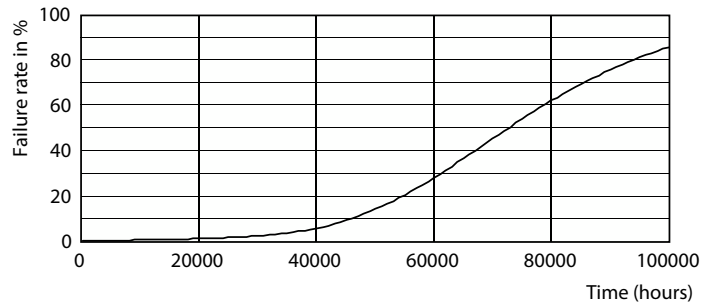
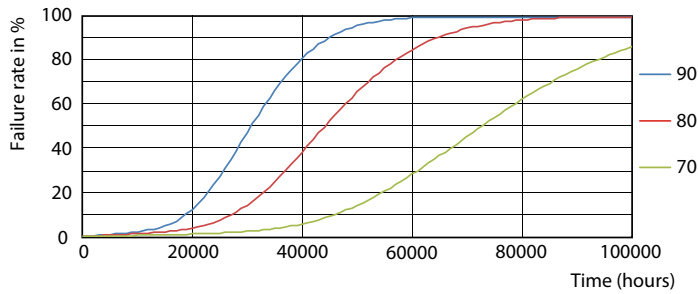
General uniform lighting

Photometric data



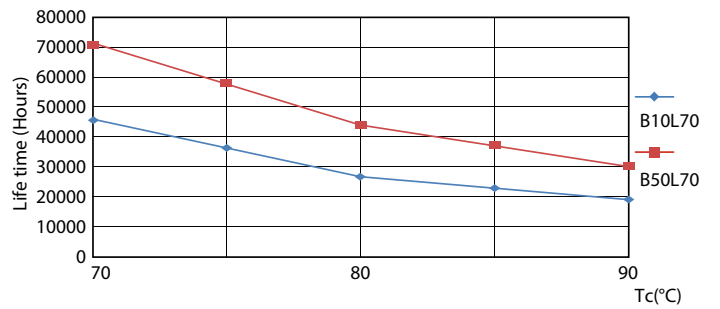
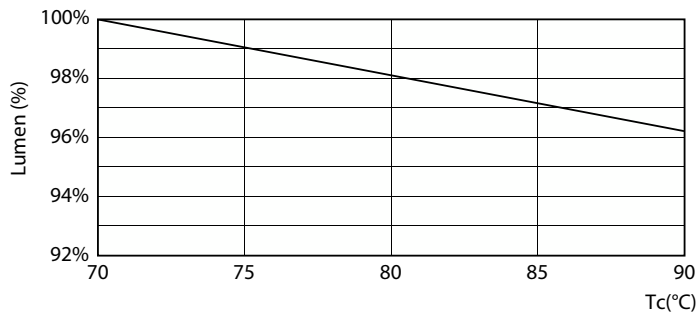
Spectral Power Distribution Colour

Lifetime



FailureRate

Life Expectancy Diagram



LumenVsTc

LifetimeVsTc

# T8

## Lifetime



Lumen Maintenance Diagram

