



# Contractor Type B MainsFit T8

## 16.5T8/CNG/48-835/MF20/G 25/1

The Contractor-grade MainsFit (UL Type B) lamps are designed to provide simple retrofit solution to move from traditional fluorescent lamps to energy saving LEDs. This ballast bypass lamp is similar to other UL Type B lamps in the Philips family by providing proven energy savings, long life (50k hours), surge suppression and industry leading safety features. All lamps in the Contractor-grade family are also double-ended to help simplify the installation.

### Product data

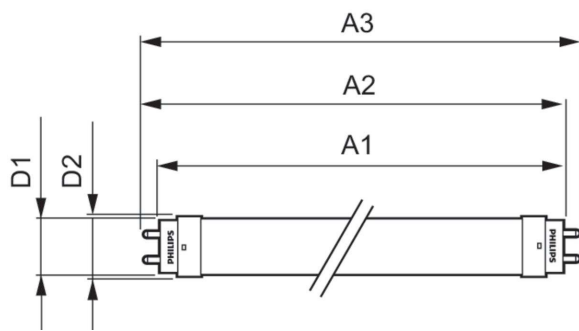
General Information		Operating and Electrical	
Cap-Base	G13 [Medium Bi-Pin Fluorescent]	Line Frequency	50 to 60 Hz
Nominal lifetime	50,000 hour(s)	Input Frequency	50 to 60 Hz
Switching Cycle	50,000	Power Consumption	16.5 W
Lighting Technology	LED	Starting Time (Nom)	0.5 s
EU RoHS compliant	Yes	Warm-up time to 60% light	0.5 s
		Power Factor (Fraction)	0.9
		Voltage (Nom)	120-277 V
Light Technical		Temperature	
Color Code	835 [CCT of 3500K]	Ambient temperature range	-20 °C to 45 °C
Beam Angle (Nom)	240 degree(s)	T-Case Maximum (Nom)	70 °C
Luminous Flux	2,000 lumen		
Color Designation	White (WH)	Controls and Dimming	
Correlated Color Temperature (Nom)	3500 K	Dimmable	Limited
Luminous Efficacy (rated) (Nom)	121.00 lm/W		
Color Consistency	<6	Mechanical and Housing	
Color rendering index (CRI)	80	Bulb Finish	Frosted
LLMF At End Of Nominal Lifetime (Nom)	70 %	Bulb Material	Glass

# Contractor Type B MainsFit T8

Product Length	1,200 mm
Bulb Shape	Tube, double-ended
<b>Approval and Application</b>	
Energy Saving Product	Yes
Approval Marks	RoHS compliance UL certificate DLC compliance
<b>Product Data</b>	
Order product name	16.5T8/CNG/48-835/MF20/G 25/1

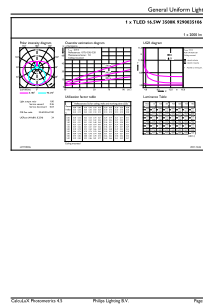
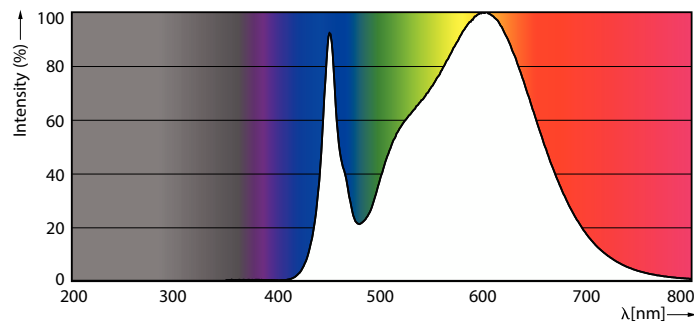
Order code	579045
Numerator - Quantity Per Pack	1
Numerator - Packs per outer box	25
Material Nr. (12NC)	929003510604
Full product name	16.5T8/CNG/48-835/MF20/G 25/1
EAN/UPC - Case	50046677579048
EAN/UPC - Product/Case	046677579043

## Dimensional drawing



Product	D1	D2	A1	A2	A3
16.5T8/CNG/48-835/MF20/G 25/1	25.7 mm	28 mm	1,198.2 mm	1,205.3 mm	1,212.4 mm

## Photometric data

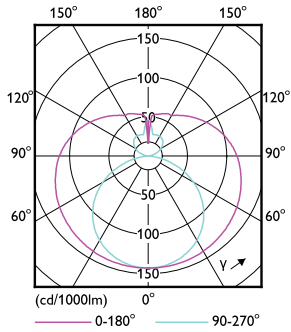


Spectral Power Distribution Colour - 16.5T8/CNG/48-835/MF20/G 25/1

General uniform lighting - 16.5T8/CNG/48-835/MF20/G 25/1

# Contractor Type B MainsFit T8

## Photometric data

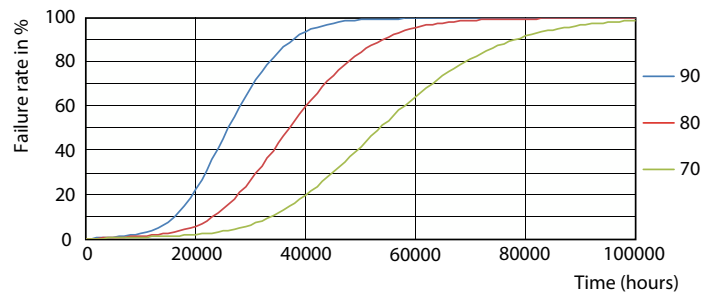


Light Distribution Diagram - 16.5T8/CNG/48-835/MF20/G 25/1

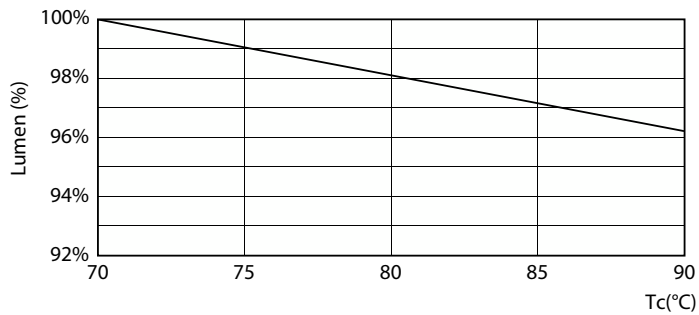
## Lifetime



Life Expectancy Diagram - 16.5T8/CNG/48-835/MF20/G 25/1



Life Expectancy Diagram - 16.5T8/CNG/48-835/MF20/G 25/1



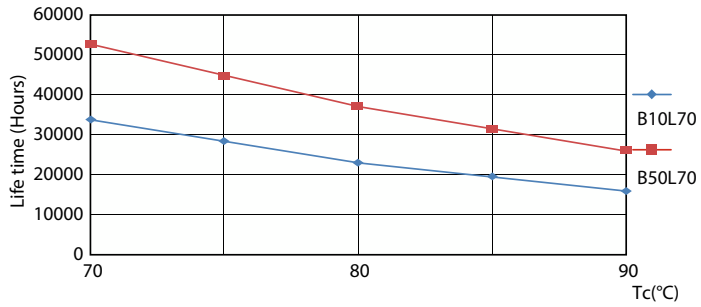
Lumen Maintenance Diagram - 16.5T8/CNG/48-835/MF20/G 25/1



Lumen Maintenance Diagram - 16.5T8/CNG/48-835/MF20/G 25/1

## Contractor Type B MainsFit T8

### Lifetime



Life Expectancy Diagram - 16.5T8/CNG/48-835/MF20/G 25/1

