



MainsFit (UL Type-B) T5

25T5HO/COR/46-835/MF33/G 25/1

The MainsFit (UL Type-B) lamps are designed to be the perfect retrofit solution to move from traditional fluorescent lamps to energy saving LEDs. This ballast bypass lamp has everything needed built into the lamp with proven energy savings, long life, surge suppression and industry leading safety features. All lamps in the MainsFit family are double-ended to help simplify the installation. In addition, all lamps meet the Philips standards for light quality so that end users will be in a comfortable environment regardless of the MainsFit lamp type.

Product data

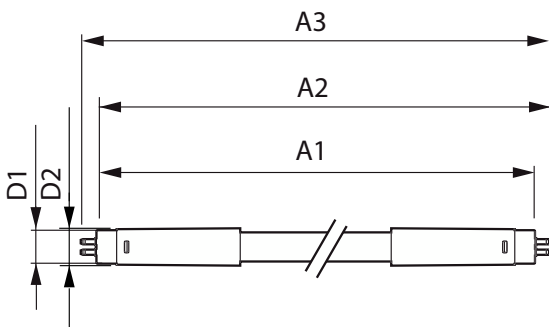
General Information		Operating and Electrical	
Cap-Base	G5 [G5]	Line Frequency	50 to 60 Hz
Nominal lifetime	50,000 hour(s)	Input Frequency	50 to 60 Hz
Switching Cycle	50,000	Power Consumption	25 W
Lighting Technology	LED	Starting Time (Nom)	0.5 s
EU RoHS compliant	Yes	Warm-up time to 60% light	0.5 s
		Power Factor (Fraction)	0.9
		Voltage (Nom)	120-277 V
Light Technical		Temperature	
Color Code	835 [CCT of 3500K]	Ambient temperature range	-20 °C to 45 °C
Beam Angle (Nom)	200 degree(s)	T-Case Maximum (Nom)	75 °C
Luminous Flux	3,300 lumen		
Color Designation	White (WH)	Controls and Dimming	
Correlated Color Temperature (Nom)	3500 K	Dimmable	Limited
Luminous Efficacy (rated) (Nom)	132.00 lm/W		
Color Consistency	<6	Mechanical and Housing	
Color rendering index (CRI)	80	Bulb Finish	Frosted
LLMF At End Of Nominal Lifetime (Nom)	70 %		

MainsFit (UL Type-B) T5

Bulb Material	Glass
Product Length	1,200 mm
Bulb Shape	Tube, double-ended
Approval and Application	
Energy Saving Product	Yes
Approval Marks	RoHS compliance UL certificate DLC compliance
Product Data	
Order product name	25T5HO/COR/46-835/MF33/G 25/1

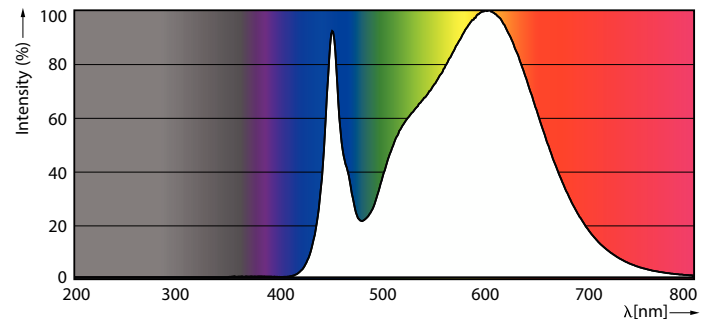
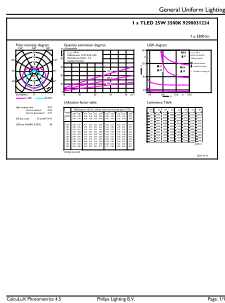
Order code	576231
Numerator - Quantity Per Pack	1
Numerator - Packs per outer box	25
Material Nr. (12NC)	929003122404
Full product name	25T5HO/COR/46-835/MF33/G 25/1
EAN/UPC - Case	50046677576238
EAN/UPC - Product/Case	046677576233

Dimensional drawing



Product	D1	D2	A1	A2	A3
25T5HO/COR/46-835/MF33/G 25/1	15.3 mm	18.2 mm	1,149 mm	1,154.9 mm	1,163.2 mm

Photometric data

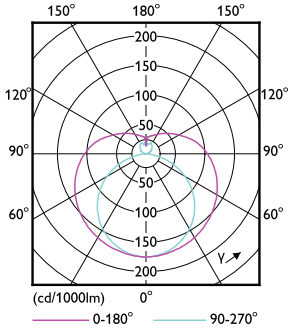


General uniform lighting - 25T5HO/COR/46-835/MF33/G 25/1

Spectral Power Distribution Colour - 25T5HO/COR/46-835/MF33/G 25/1

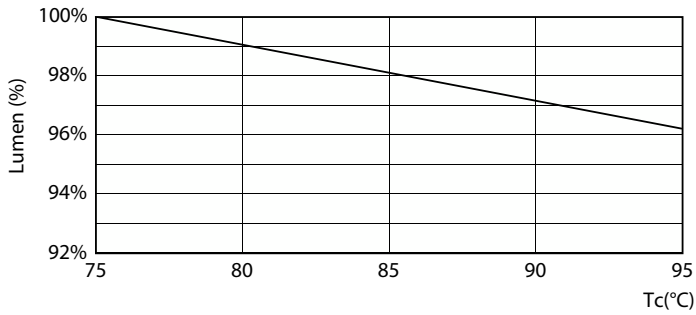
MainsFit (UL Type-B) T5

Photometric data

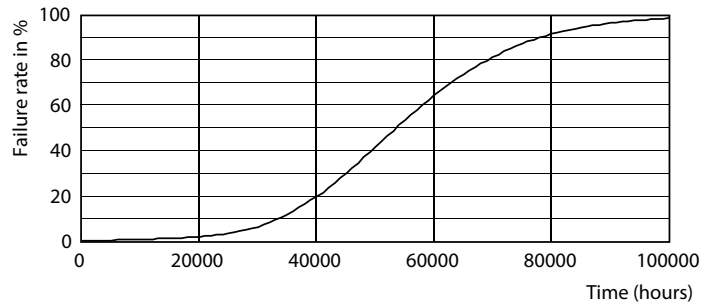


Light Distribution Diagram - 25T5HO/COR/46-835/MF33/G 25/1

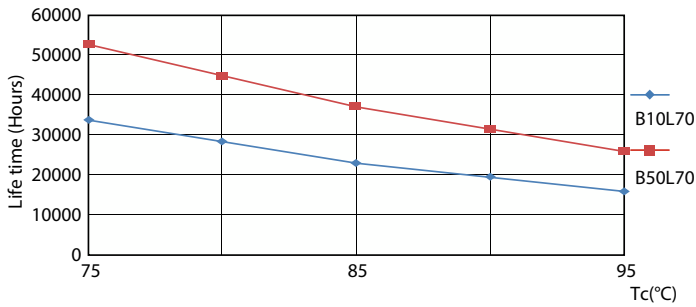
Lifetime



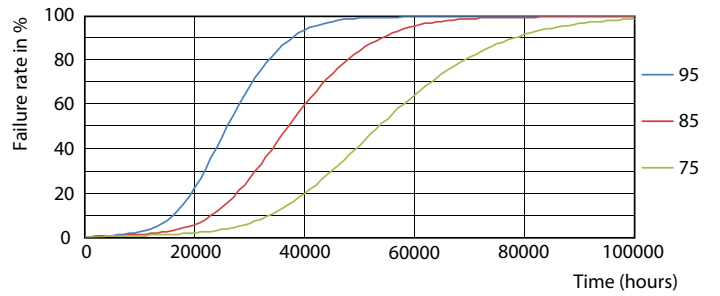
Lumen Maintenance Diagram - 25T5HO/COR/46-835/MF33/G 25/1



Life Expectancy Diagram - 25T5HO/COR/46-835/MF33/G 25/1



Life Expectancy Diagram - 25T5HO/COR/46-835/MF33/G 25/1



Life Expectancy Diagram - 25T5HO/COR/46-835/MF33/G 25/1

MainsFit (UL Type-B) T5

