

T8

42T8HO/COR/96-850/MF54/G/FA8 10/1

Our TLEDs are available in InstantFit (Type A / Type C) or MainsFit (Ballast bypass / Type B) versions. The InstantFit lamps work on a broad variety of ballasts and LED drivers. Only InstantFit has over 15,000 lamp & ballast combinations delivering even light output, energy savings and a long lifetime. Our MainsFit products feature a double-ended design, simplifying installation while a proprietary safety circuit minimizes a shock risk. Lamp sizes range from 2-foot to 8-foot and U-bend with a variety of lumen outputs.

Product data

General information		Lamp Current (Max)	
Cap-Base	FA8 [FA8]	Lamp Current (Max)	400 mA
EU RoHS compliant	Yes	Lamp Current (Min)	180 mA
Nominal Lifetime (Nom)	50000 h	Wattage Equivalent	96 W
Switching Cycle	50000	Starting Time (Nom)	0.5 s
		Warm Up Time to 60% Light (Nom)	0.5 s
Light technical		UL Type	Type B - bypass the ballast
Color Code	850 [CCT of 5000K]	Power Factor (Nom)	0.9
Beam Angle (Nom)	240 °	Voltage (Nom)	120-277 V
Luminous Flux (Nom)	5400 lm	Temperature	
Color Designation	Daylight [Daylight]	T-Ambient (Max)	45 °C
Correlated Color Temperature (Nom)	5000 K	T-Ambient (Min)	-20 °C
Luminous Efficacy (rated) (Nom)	128.00 lm/W	T-Storage (Max)	65 °C
Color Consistency	<5	T-Storage (Min)	-40 °C
Color Rendering Index (Nom)	80	T-Case Maximum (Nom)	55 °C
LLMF At End Of Nominal Lifetime (Nom)	70 %	Controls and dimming	
Operating and electrical		Dimmable	Limited
Input Frequency	50 to 60 Hz		
Power (Rated) (Nom)	42 W		

T8

Mechanical and housing

Bulb Finish	Frosted
Bulb Material	Glass
Product Length	2400 mm
Bulb Shape	Tube, double-ended

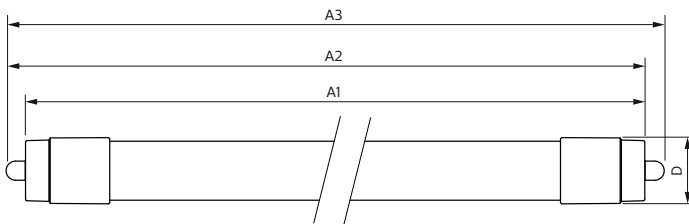
Approval and application

Energy Saving Product	Yes
Approval Marks	RoHS compliance UL certificate
Approval Marks	DLC compliance

Product data

Order product name	42T8HO/COR/96-850/MF54/G/FA8 10/1
EAN/UPC - Product	046677575144
Order code	575142
Numerator - Quantity Per Pack	1
Numerator - Packs per outer box	10
Material Nr. (12NC)	929003099504
Net Weight (Piece)	0.400 kg
Model Number	9290030995

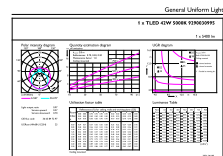
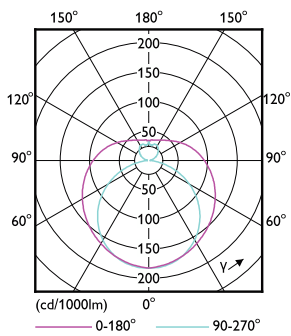
Dimensional drawing



Product	D2	A1	A2	A3
42T8HO/COR/96-850/ MF54/G/FA8 10/1	27.9 mm	2369.8 mm	2378.7 mm	2387.8 mm

42T8HO/COR/96-850/MF54/G/FA8 10/1

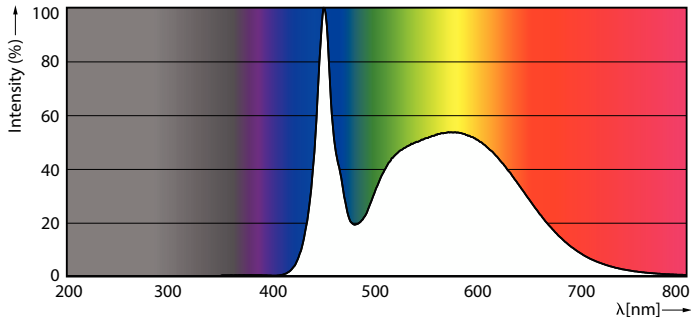
Photometric data



LEDtube COR 8ft 42W FA8 5400lm-LDD

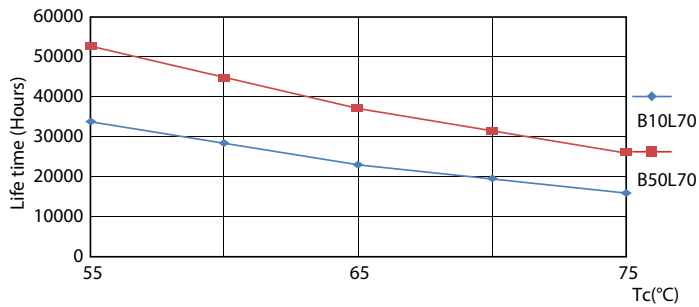
LEDtube COR 8ft 42W FA8 5400lm 850-GUL

Photometric data

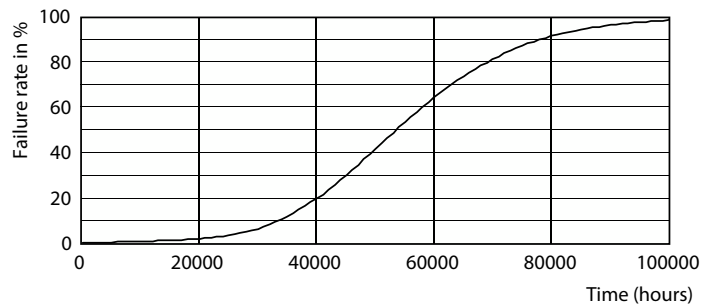


LEDtube COR 8ft 42W FA8 5400lm 850-POC

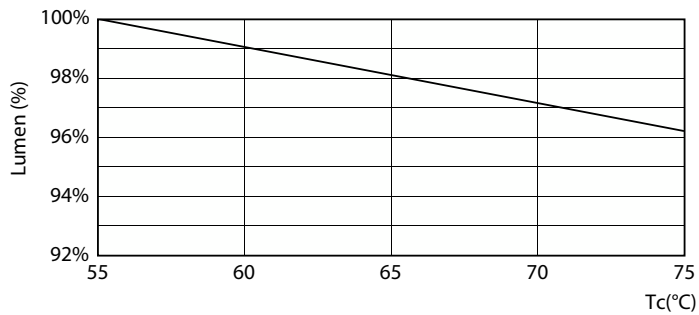
Lifetime



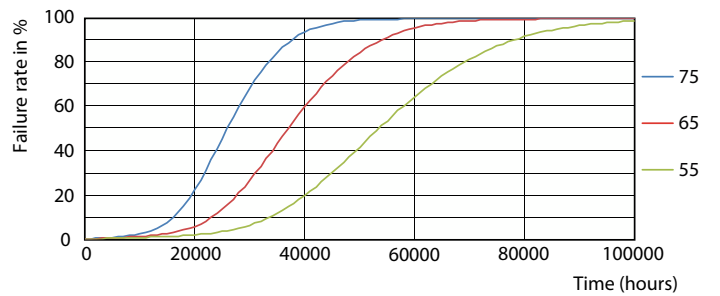
LEDtube COR 8ft 42W 50K LifetimeVsTc-LED



Life Expectancy Diagram



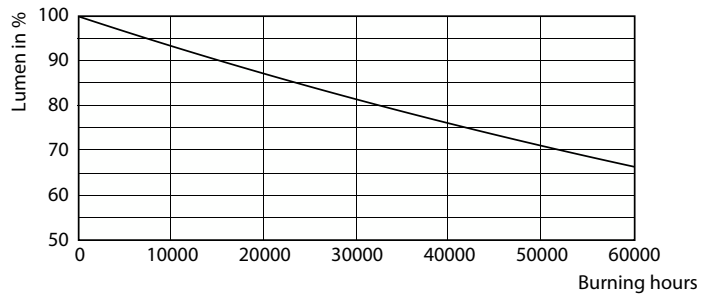
LEDtube COR 8ft 42W 50K LumenVsTc-LMP



LEDtube COR 8ft 42W 50K FailureRate-LED

T8

Lifetime



Lumen Maintenance Diagram

