



T8

10.5T8/MAS/48-835/MF15/P 10/1

Our TLEDs are available in InstantFit (Type A / Type C) or MainsFit (Ballast bypass / Type B) versions. The InstantFit lamps work on a broad variety of ballasts and LED drivers. Only InstantFit has over 15,000 lamp & ballast combinations delivering even light output, energy savings and a long lifetime. Our MainsFit products feature a double-ended design, simplifying installation while a proprietary safety circuit minimizes a shock risk. Lamp sizes range from 2-foot to 8-foot and U-bend with a variety of lumen outputs.

Product data

General information		Lamp Current (Max)	
Cap-Base	G13 [Medium Bi-Pin Fluorescent]	Lamp Current (Max)	100 mA
EU RoHS compliant	Yes	Lamp Current (Min)	43 mA
Nominal Lifetime (Nom)	70000 h	Wattage Equivalent	32 W
Switching Cycle	50000	Starting Time (Nom)	0.5 s
		Warm Up Time to 60% Light (Nom)	0.5 s
		UL Type	Type B - bypass the ballast
		Power Factor (Nom)	0.9
		Voltage (Nom)	120-277 V
Light technical		Temperature	
Color Code	835 [CCT of 3500K]	T-Ambient (Max)	45 °C
Beam Angle (Nom)	180 °	T-Ambient (Min)	-20 °C
Luminous Flux (Nom)	1600 lm	T-Ambient (Min)-DUP(do not use)	-20 °C
Color Designation	White (WH)	T-Storage (Max)	65 °C
Correlated Color Temperature (Nom)	3500 K	T-Storage (Min)	-40 °C
Luminous Efficacy (rated) (Nom)	152.00 lm/W	T-Case Maximum (Nom)	70 °C
Color Consistency	<6		
Color Rendering Index (Nom)	80	Controls and dimming	
LLMF At End Of Nominal Lifetime (Nom)	70 %	Dimmable	Limited
Operating and electrical			
Input Frequency	50 to 60 Hz		
Power (Rated) (Nom)	10.5 W		

T8

Mechanical and housing

Bulb Finish	Frosted
Bulb Material	Plastic
Product Length	1200 mm
Bulb Shape	Tube, double-ended

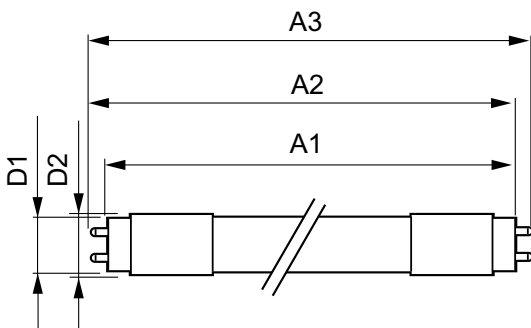
Approval and application

Energy Saving Product	Yes
Approval Marks	RoHS compliance UL certificate
Approval Marks	DLC compliance

Product data

Order product name	10.5T8/MAS/48-835/MF15/P 10/1
EAN/UPC - Product	046677575489
Order code	575480
Numerator - Quantity Per Pack	1
Numerator - Packs per outer box	10
Material Nr. (12NC)	929002325134
Net Weight (Piece)	0.120 kg
Model Number	9290023251

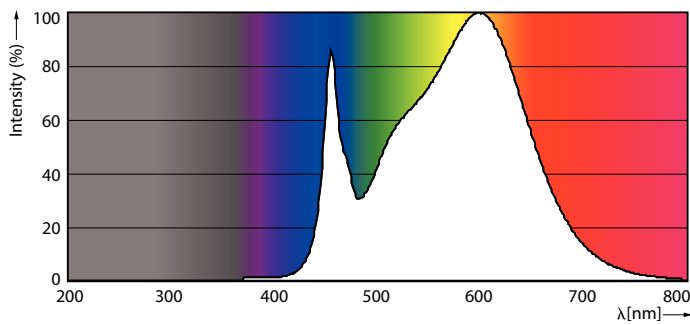
Dimensional drawing



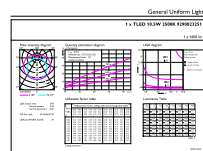
10.5T8/MAS/48-835/MF15/P 10/1

Product	D1	D2	A1	A2	A3
10.5T8/MAS/48-835/MF15/P 10/1	25.7 mm	28 mm	1198 mm	1205 mm	1212 mm

Photometric data



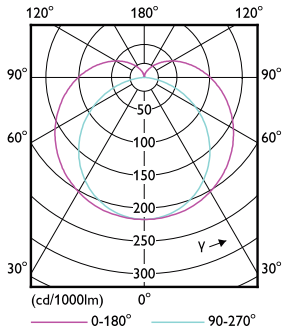
LEDtube_G13_835-POC



General Uniform Lighting

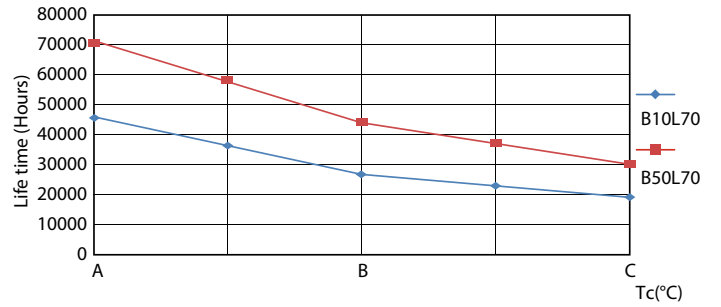
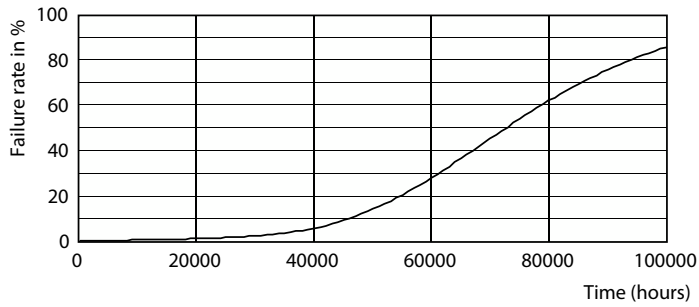
LEDtube_10.5W_G13_835-GUL

Photometric data

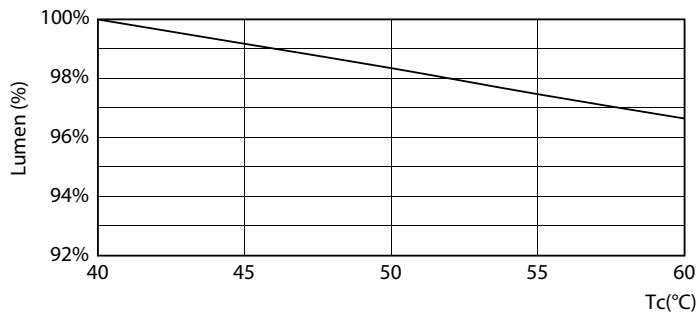


LEDtube_G13_1-LDD

Lifetime

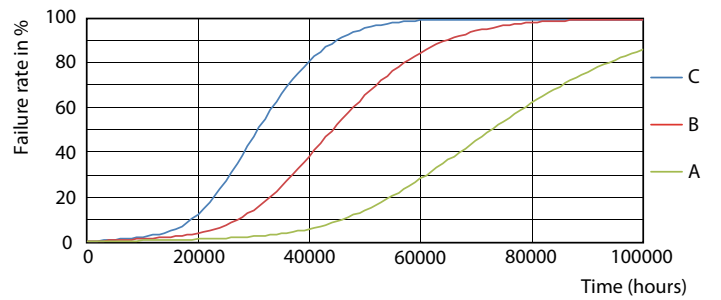


Life Expectancy Diagram



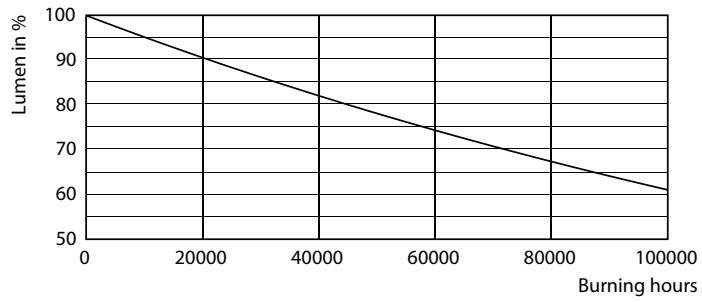
LEDtube_70K_LumenVsTc-LMP

LEDtube_70K_LifetimeVsTc-LED



LEDtube_70K_FailureRate-LED

Lifetime



Lumen Maintenance Diagram

