

T8

16.5T8/COR/48-835/MF20/G/347V 25/1

Our TLEDs are available in InstantFit (Type A / Type C) or MainsFit (Ballast bypass / Type B) versions. The InstantFit lamps work on a broad variety of ballasts and LED drivers. Only InstantFit has over 15,000 lamp & ballast combinations delivering even light output, energy savings and a long lifetime. Our MainsFit products feature a double-ended design, simplifying installation while a proprietary safety circuit minimizes a shock risk. Lamp sizes range from 2-foot to 8-foot and U-bend with a variety of lumen outputs.

Product data

General Information	
Cap-Base	G13 [Medium Bi-Pin Fluorescent]
EU RoHS compliant	Yes
Nominal Lifetime (Nom)	50000 h
Switching Cycle	50000X
Light Technical	
Color Code	835 [CCT of 3500K]
Beam Angle (Nom)	240 °
Luminous Flux (Nom)	2000 lm
Color Designation	White (WH)
Correlated Color Temperature (Nom)	3500 K
Luminous Efficacy (rated) (Nom)	121.00 lm/W
Color Consistency	<6
Color Rendering Index (Nom)	80
LLMF At End Of Nominal Lifetime (Nom)	70 %
Operating and Electrical	
Input Frequency	50 to 60 Hz
Power (Rated) (Nom)	16.5 W

Starting Time (Nom)	0.5 s
Warm Up Time to 60% Light (Nom)	0.9 s
UL Type	Type B - bypass the ballast
Power Factor (Nom)	0.9
Voltage (Nom)	347 V
Temperature	
T-Ambient (Max)	45 °C
T-Ambient (Min)	-20 °C
T-Storage (Max)	85 °C
T-Storage (Min)	-40 °C
T-Case Maximum (Nom)	55 °C
Controls and Dimming	
Dimmable	No
Mechanical and Housing	
Bulb Material	Glass
Product Length	1200 mm

T8

Approval and Application

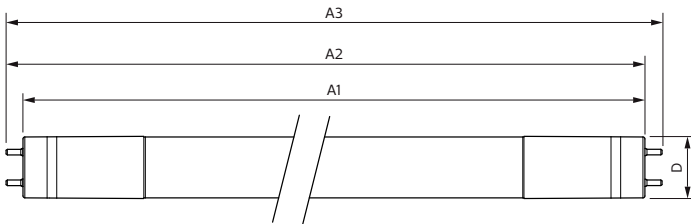
Energy Efficiency Label (EEL)	Not applicable
Energy Saving Product	Yes
Approval Marks	RoHS compliance UL certificate DLC compliance
Energy Consumption kWh/1000 h	- kWh

Product Data

Order product name	16.5T8/COR/48-835/MF20/G/347V 25/1
--------------------	------------------------------------

EAN/UPC - Product	046677554675
Order code	554675
Numerator - Quantity Per Pack	1
Numerator - Packs per outer box	25
Material Nr. (12NC)	929002263904
Net Weight (Piece)	0.096 kg

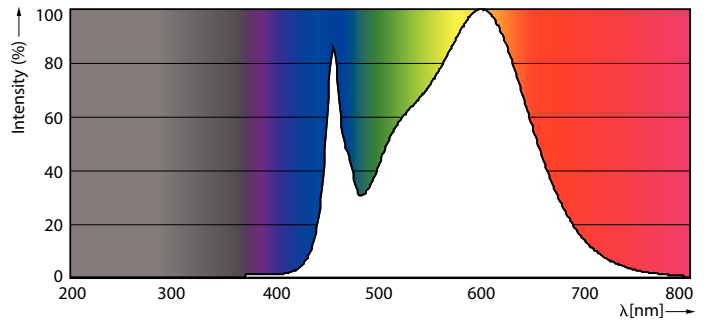
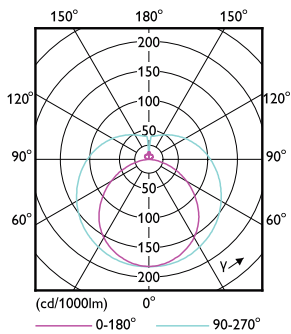
Dimensional drawing



Product	D	A1	A2	A3
16.5T8/COR/48-835/MF20/G/ 347V 25/1	26 mm	1199.4 mm	1206.5 mm	1213.6 mm

TLED 1200mm 16.5-32W 2000lm 3500K G13

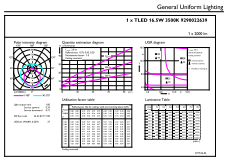
Photometric data



T8 COR MF20 G-LDD

T8 COR MF20 G-POC

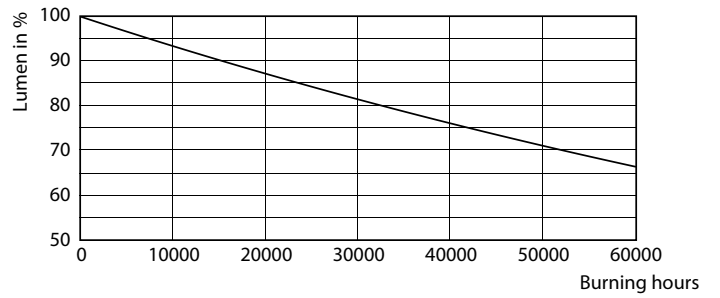
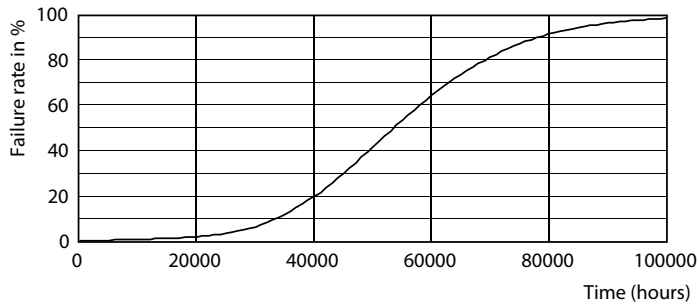
Photometric data



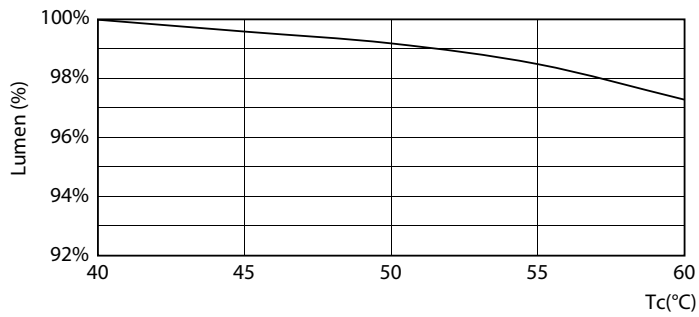
© 2021 Philips Lighting B.V. Page 11 of 11

T8 COR MF20 G-GUL

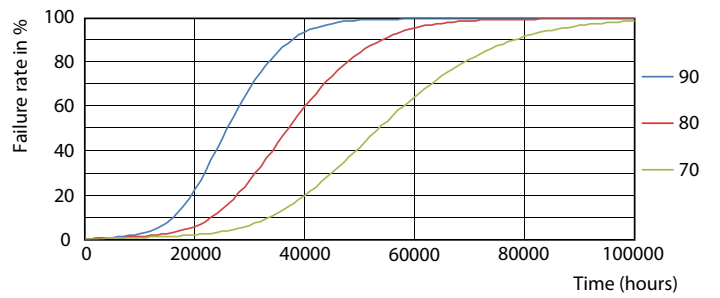
Lifetime



T8 COR MF20 G-LED



T8 COR MF20 G-LMP

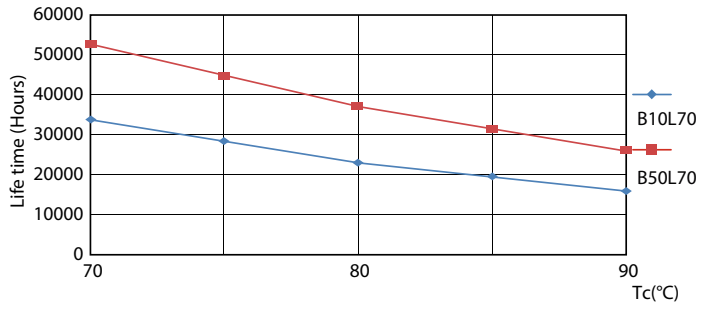


T8 COR G LumenVsTc-LMP

T8 COR G FailureRate-LED

T8

Lifetime



T8 COR G LifetimeVsTc-LED

