



# T8

## 44T8HO/COR/96-840/MF54/G/R17d 10/1

Our TLEDs are available in InstantFit (Type A / Type C) or MainsFit (Ballast bypass / Type B) versions. The InstantFit lamps work on a broad variety of ballasts and LED drivers. Only InstantFit has over 15,000 lamp & ballast combinations delivering even light output, energy savings and a long lifetime. Our MainsFit products feature a double-ended design, simplifying installation while a proprietary safety circuit minimizes a shock risk. Lamp sizes range from 2-foot to 8-foot and U-bend with a variety of lumen outputs.

### Product data

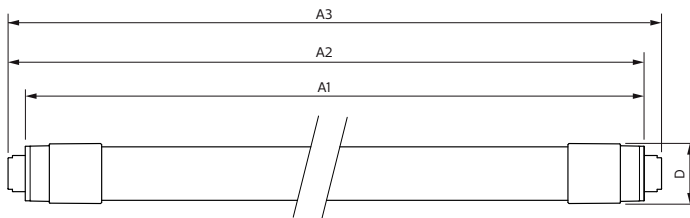
General Information		Lamp Current (Max)	
Cap-Base	R17D [ R17d (RDC)]	Lamp Current (Min)	375 mA
EU RoHS compliant	Yes	Starting Time (Nom)	168 mA
Nominal Lifetime (Nom)	50000 h	Warm Up Time to 60% Light (Nom)	0.5 s
Switching Cycle	50000X	UL Type	Type B - bypass the ballast
		Power Factor (Nom)	0.9
		Voltage (Nom)	120-277 V
Light Technical		Temperature	
Color Code	841 [ CCT of 4100K (841)]	T-Ambient (Max)	45 °C
Beam Angle (Nom)	240 °	T-Ambient (Min)	-20 °C
Luminous Flux (Nom)	5400 lm	T-Storage (Max)	65 °C
Color Designation	Cool White (CW)	T-Storage (Min)	-40 °C
Correlated Color Temperature (Nom)	4000 K	T-Case Maximum (Nom)	55 °C
Luminous Efficacy (rated) (Nom)	122.00 lm/W		
Color Consistency	<6	Controls and Dimming	
Color Rendering Index (Nom)	82	Dimmable	No
LLMF At End Of Nominal Lifetime (Nom)	70 %		
Operating and Electrical		Mechanical and Housing	
Input Frequency	50 to 60 Hz	Bulb Material	Glass
Power (Rated) (Nom)	44 W		

# T8

Product Length	2400 mm
Bulb Shape	Tube, double-ended
<b>Approval and Application</b>	
Energy Saving Product	Yes
Approval Marks	RoHS compliance UL certificate DLC compliance
Energy Consumption kWh/1000 h	- kWh
<b>Product Data</b>	
Order product name	44T8HO/COR/96-840/MF54/G/R17d 10/1

EAN/UPC - Product	046677545284
Order code	545285
Numerator - Quantity Per Pack	1
Numerator - Packs per outer box	10
Material Nr. (12NC)	929002014204
Net Weight (Piece)	0.740 kg

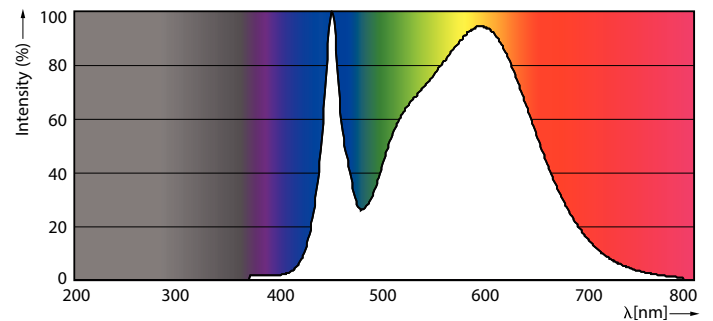
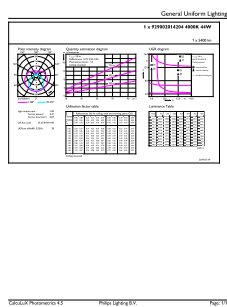
## Dimensional drawing



Product	D1	D2	A1	A2	A3
44T8HO/COR/96-840/ MF54/G/R17d 10/1	28 mm	27.8 mm	2369.8 mm	2378.7 mm	2387.8 mm

TLED MF CorePro 8ft 5400lm R17d 4000K

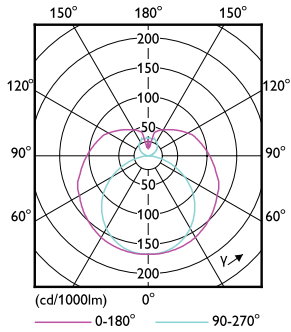
## Photometric data



LEDtube R17D 4000K 240D

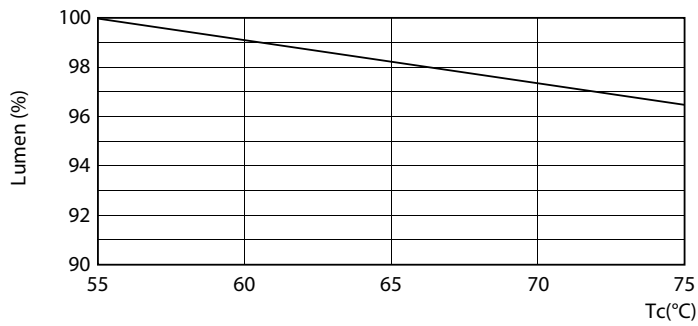
LEDtube FA8 4000K 240D

Photometric data

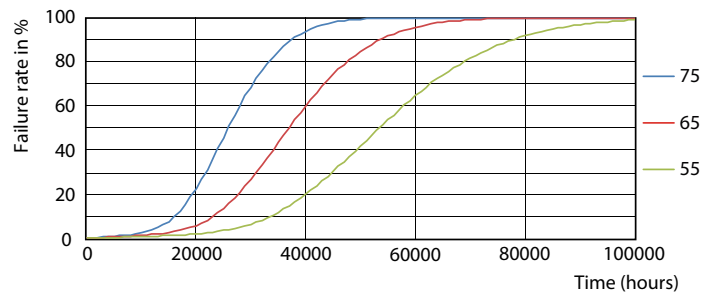


LEDtube FA8 4000K 240D

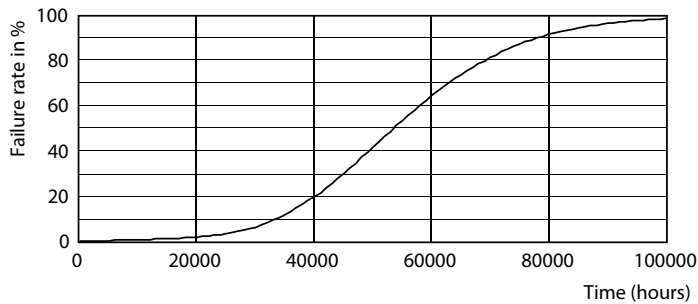
Lifetime



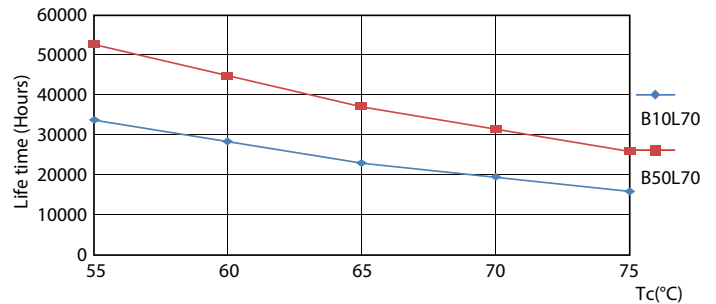
LEDtube R17D 4000K 240D LumenVsTc



LEDtube R17D 4000K 240D FailureRate



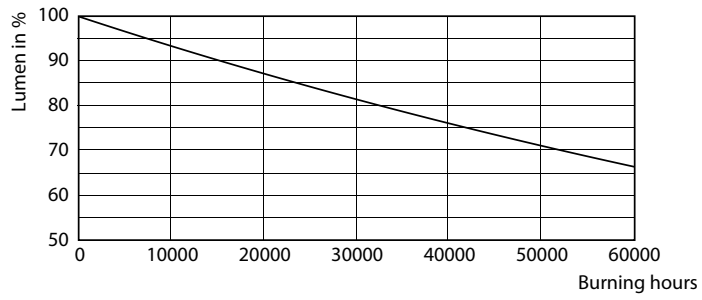
LEDtube FA8 4000K 240D



LEDtube R17D 4000K 240D LifetimeVsTc

# T8

## Lifetime



LEDtube FA8 4000K 240D

