



T8

34T8/COR/96-850/MF42/G/FA8 10/1

Our TLEDs are available in InstantFit (Type A / Type C) or MainsFit (Ballast bypass / Type B) versions. The InstantFit lamps work on a broad variety of ballasts and LED drivers. Only InstantFit has over 15,000 lamp & ballast combinations delivering even light output, energy savings and a long lifetime. Our MainsFit products feature a double-ended design, simplifying installation while a proprietary safety circuit minimizes a shock risk. Lamp sizes range from 2-foot to 8-foot and U-bend with a variety of lumen outputs.

Product data

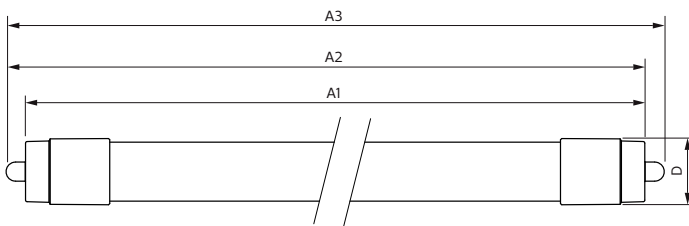
General Information		Lamp Current (Max)		Lamp Current (Min)		Starting Time (Nom)		Warm Up Time to 60% Light (Nom)		UL Type		Power Factor (Nom)		Voltage (Nom)	
Cap-Base	FA8 [FA8]		290 mA		133 mA		0.5 s		0.5 s		Type B - bypass the ballast		0.9		120-277 V
EU RoHS compliant	Yes														
Nominal Lifetime (Nom)	50000 h														
Switching Cycle	50000X														
Light Technical		Temperature		Controls and Dimming		Mechanical and Housing									
Color Code	850 [CCT of 5000K]	T-Ambient (Max)	45 °C	Dimmable	No	Bulb Material	Glass								
Beam Angle (Nom)	240 °	T-Ambient (Min)	-20 °C												
Luminous Flux (Nom)	4200 lm	T-Storage (Max)	65 °C												
Color Designation	Daylight [Daylight]	T-Storage (Min)	-40 °C												
Correlated Color Temperature (Nom)	5000 K	T-Case Maximum (Nom)	45 °C												
Luminous Efficacy (rated) (Nom)	123.00 lm/W														
Color Consistency	<5														
Color Rendering Index (Nom)	82														
LLMF At End Of Nominal Lifetime (Nom)	70 %														
Operating and Electrical															
Input Frequency	50 to 60 Hz														
Power (Rated) (Nom)	34 W														

T8

Product Length	2400 mm
Bulb Shape	Tube, double-ended
Approval and Application	
Energy Saving Product	Yes
Approval Marks	RoHS compliance UL certificate DLC compliance
Energy Consumption kWh/1000 h	- kWh
Product Data	
Order product name	34T8/COR/96-850/MF42/G/FA8 10/1

EAN/UPC - Product	046677545277
Order code	545277
Numerator - Quantity Per Pack	1
Numerator - Packs per outer box	10
Material Nr. (12NC)	929002014104
Net Weight (Piece)	0.740 kg

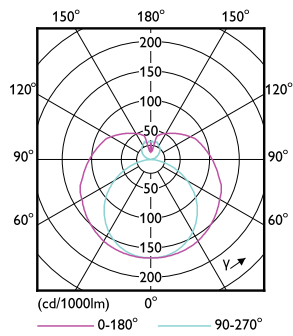
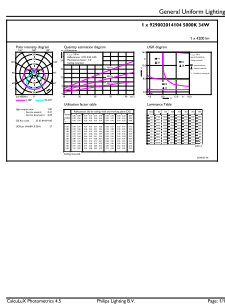
Dimensional drawing



Product	D1	D2	A1	A2	A3
34T8/COR/96-850/ MF42/G/FA8 10/1	28 mm	27.9 mm	2369.8 mm	2378.7 mm	2387.8 mm

TLED MF CorePro 8ft 4200lm FA8 5000K

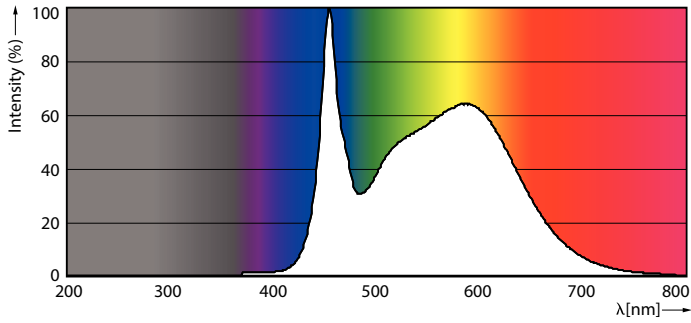
Photometric data



LEDtube FA8 5000K 240D

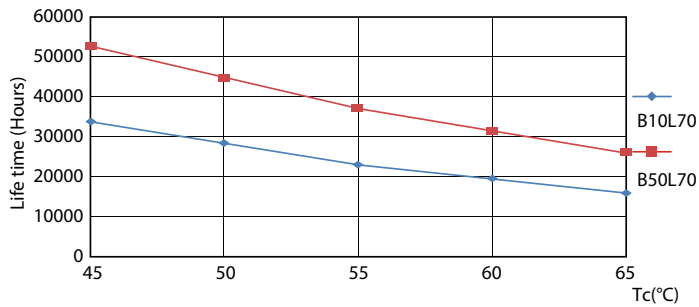
LEDtube FA8 4000K 240D

Photometric data

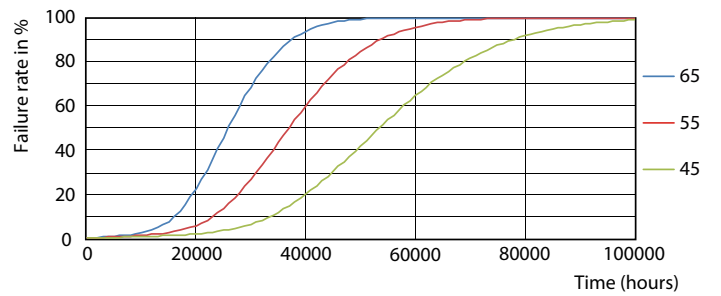


LEDtube FA8 5000K 240D

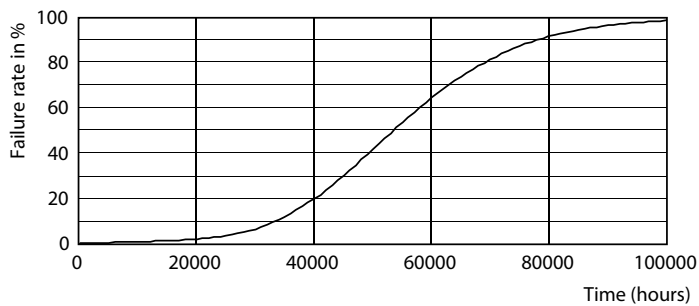
Lifetime



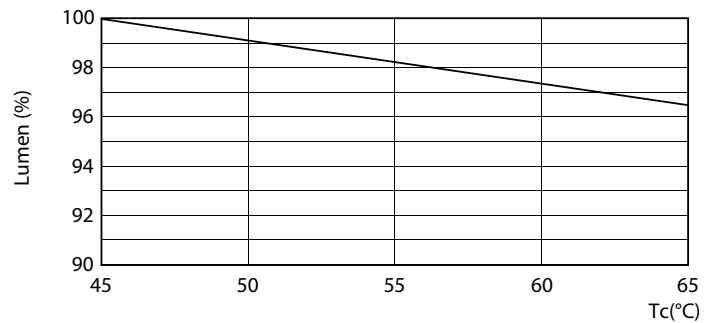
LEDtube FA8 4000K 240D LifetimeVsTc



LEDtube FA8 4000K 240D FailureRate



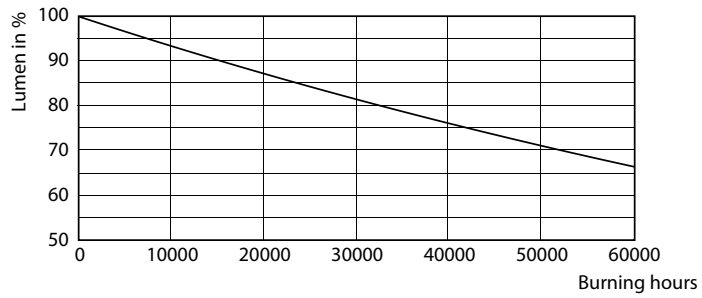
LEDtube FA8 4000K 240D



LEDtube FA8 4000K 240D LumenVsTc

T8

Lifetime



LEDtube FA8 4000K 240D

