



T5

25T5HO/COR/46-835/MF33/G 25/1

Philips T5 LED tubes offer an affordable, energy saving retrofit solution. The T5 lamps have been engineered to withstand the test of time with a 50,000-hour lifetime and a limited 5-year warranty to back it up. The lighting performance effectively replaces conventional fluorescent T5 HO or T5 HE lamps. Available in either InstantFit (Type A or Type C) or MainsFit (Type B / Ballast bypass), Philips T5 TLEDs provide a variety of options for any application.

Product data

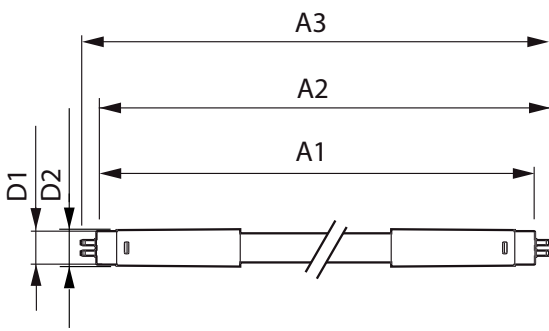
General Information		Lamp Current (Min)	
Cap-Base	G5 [G5]		95 mA
EU RoHS compliant	Yes	Starting Time (Nom)	0.45 s
Nominal Lifetime (Nom)	50000 h	Warm Up Time to 60% Light (Nom)	0.5 s
Switching Cycle	50000X	UL Type	Type B - bypass the ballast
		Power Factor (Nom)	0.9
		Voltage (Nom)	120-277 V
Light Technical		Temperature	
Color Code	835 [CCT of 3500K]	T-Ambient (Max)	45 °C
Beam Angle (Nom)	200 °	T-Ambient (Min)	-20 °C
Luminous Flux (Nom)	3300 lm	T-Storage (Max)	65 °C
Color Designation	White (WH)	T-Storage (Min)	-40 °C
Correlated Color Temperature (Nom)	3500 K	T-Case Maximum (Nom)	75 °C
Luminous Efficacy (rated) (Nom)	132.00 lm/W		
Color Consistency	<6	Controls and Dimming	
Color Rendering Index (Nom)	80	Dimmable	No
LLMF At End Of Nominal Lifetime (Nom)	70 %		
Operating and Electrical		Mechanical and Housing	
Input Frequency	50 to 60 Hz	Bulb Material	Glass
Power (Rated) (Nom)	25 W	Product Length	1200 mm
Lamp Current (Max)	210 mA		

T5

Bulb Shape	Tube, double-ended
Approval and Application	
Energy Saving Product	Yes
Approval Marks	RoHS compliance UL certificate DLC compliance
Energy Consumption kWh/1000 h	- kWh
Product Data	
Order product name	25T5HO/COR/46-835/MF33/G 25/1

EAN/UPC - Product	046677542054
Order code	542050
Numerator - Quantity Per Pack	1
Numerator - Packs per outer box	25
Material Nr. (12NC)	929001992504
Net Weight (Piece)	0.215 kg

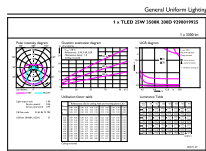
Dimensional drawing



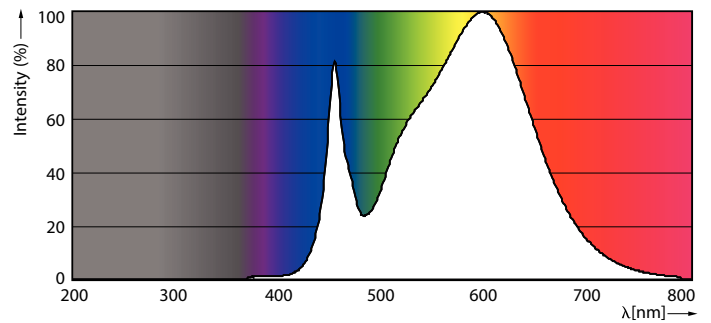
TLED 120-277V25W-54W 3300lm 3500K G5 ND

Product	D1	D2	A1	A2	A3
25T5HO/COR/46-835/MF33/G 25/1	15.3 mm	18.6 mm	1147.8 mm	1154.9 mm	1162 mm

Photometric data

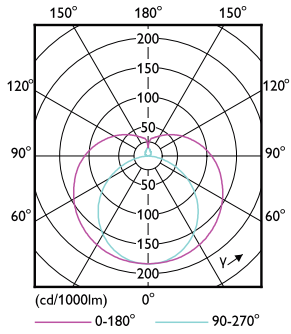


LEDtube G5 3500K



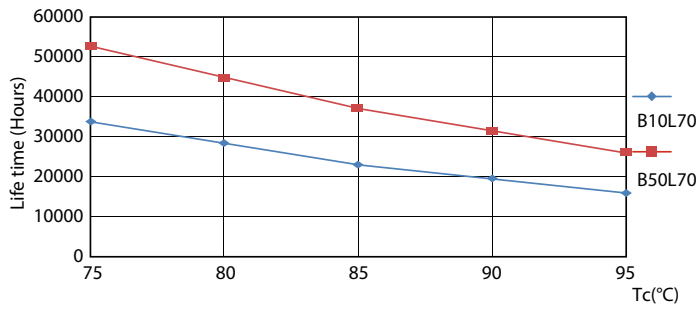
LEDtube G5 3500K

Photometric data

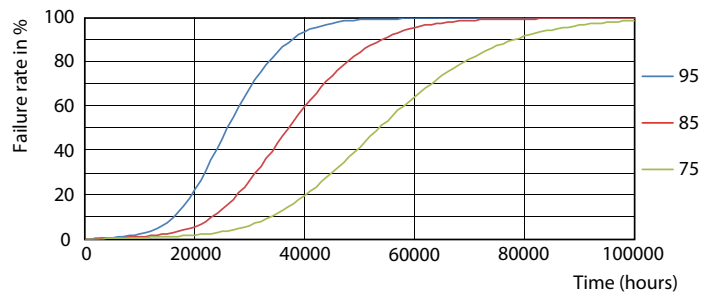


LEDtube G5 25W

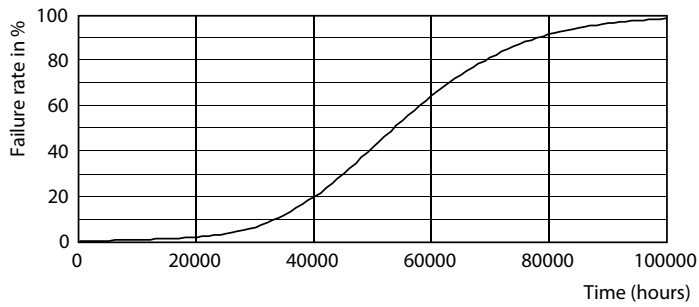
Lifetime



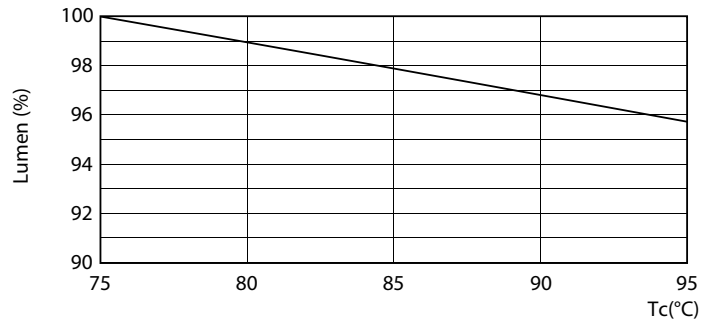
LEDtube G5 25W LifetimeVsTc



LEDtube G5 25W FailureRate



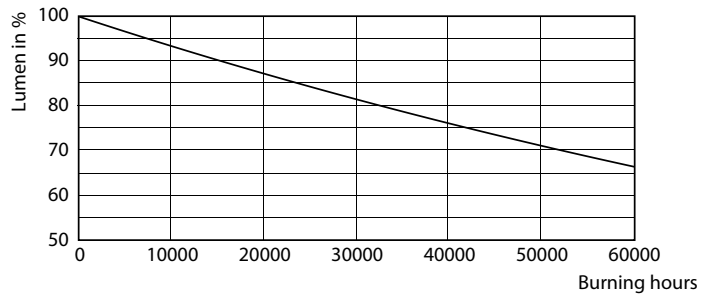
LEDtube G5 25W



LEDtube G5 25W LumenVsTc

T5

Lifetime



LEDtube G5 25W

