

T8

8.5T8/MAS/36-830/IF13/P/DIM 10/1

Our TLEDs are available in InstantFit (Type A / Type C) or MainsFit (Ballast bypass / Type B) versions. The InstantFit lamps work on a broad variety of ballasts and LED drivers. Only InstantFit has over 15,000 lamp & ballast combinations delivering even light output, energy savings and a long lifetime. Our MainsFit products feature a double-ended design, simplifying installation while a proprietary safety circuit minimizes a shock risk. Lamp sizes range from 2-foot to 8-foot and U-bend with a variety of lumen outputs.

Product data

General Information	
Cap-Base	G13 [Medium Bi-Pin Fluorescent]
EU RoHS compliant	Yes
Nominal Lifetime (Nom)	70000 h
Switching Cycle	50000X
Light Technical	
Color Code	830 [CCT of 3000K]
Beam Angle (Nom)	180 °
Luminous Flux (Nom)	1350 lm
Color Designation	White (WH)
Correlated Color Temperature (Nom)	3000 K
Luminous Efficacy (rated) (Nom)	152.00 lm/W
Color Consistency	<6
Color Rendering Index (Nom)	80
LLMF At End Of Nominal Lifetime (Nom)	70 %
Operating and Electrical	
Input Frequency	20K to 120K Hz
Power (Rated) (Nom)	8.5 W

Starting Time (Nom)	0.5 s
Warm Up Time to 60% Light (Nom)	0.5 s
UL Type	Type A - works on ballast
Power Factor (Nom)	0.9
Voltage (Nom)	120-277, 347 V

Temperature	
T-Ambient (Max)	45 °C
T-Ambient (Min)	-20 °C
T-Storage (Max)	65 °C
T-Storage (Min)	-40 °C
T-Case Maximum (Nom)	50 °C

Controls and Dimming	
Dimmable	Yes

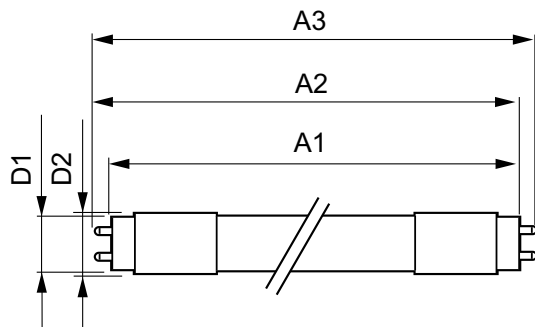
Mechanical and Housing	
Bulb Material	Plastic
Product Length	900 mm

T8

Bulb Shape	Tube, double-ended
Approval and Application	
Energy Saving Product	Yes
Approval Marks	RoHS compliance UL certificate DLC compliance
Energy Consumption kWh/1000 h	- kWh
Energy Certifications	DLC Standard
Product Data	
Order product name	8.5T8/MAS/36-830/IF13/P/DIM 10/1

EAN/UPC - Product	046677539856
Order code	539858
Numerator - Quantity Per Pack	1
Numerator - Packs per outer box	10
Material Nr. (12NC)	929001967504
Net Weight (Piece)	0.160 kg

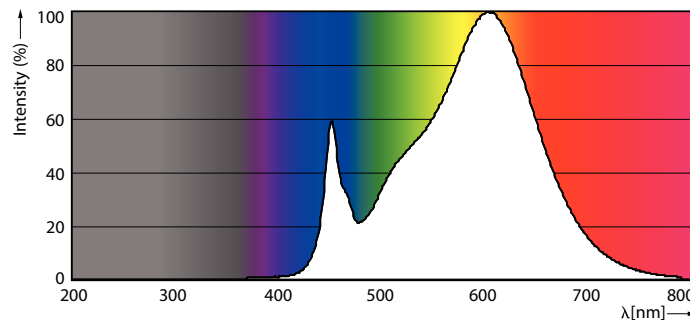
Dimensional drawing



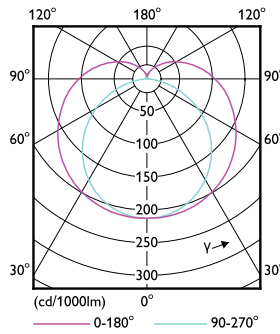
TLED IF MasterClass 3ft 1300lm 3000K

Product	D1	D2	A1	A2	A3
8.5T8/MAS/36-830/IF13/P/DIM 10/1	25.7 mm	26.3 mm	893.4 mm	900.5 mm	907.6 mm

Photometric data

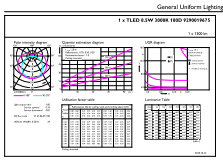


G13 3000K 1300lm



G13 4000K

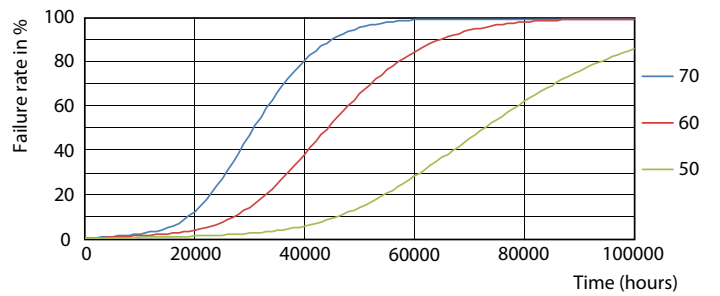
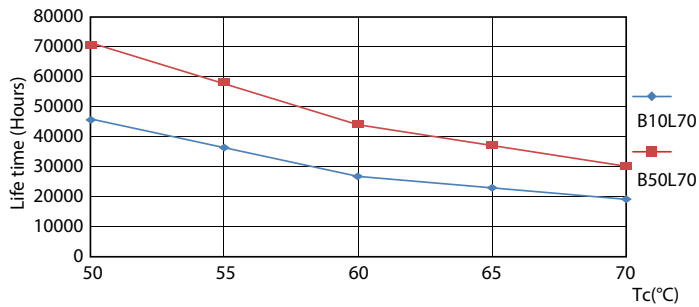
Photometric data



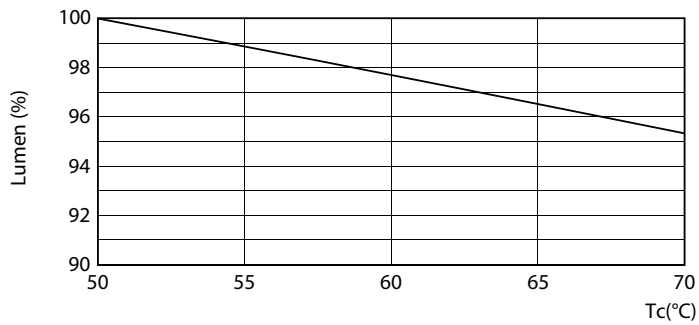
© 2021 Philips Lighting B.V. Page 11

G13 3000K 1300lm

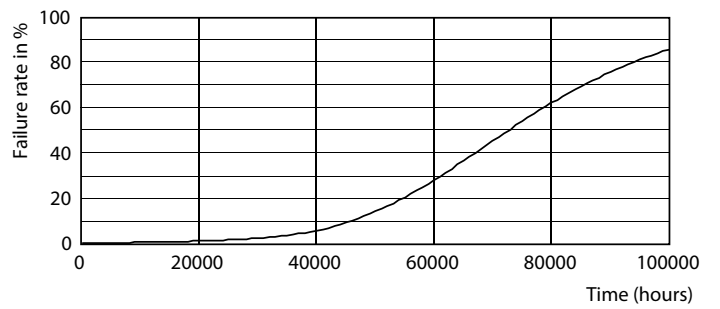
Lifetime



G13 4000K



G13 4000K

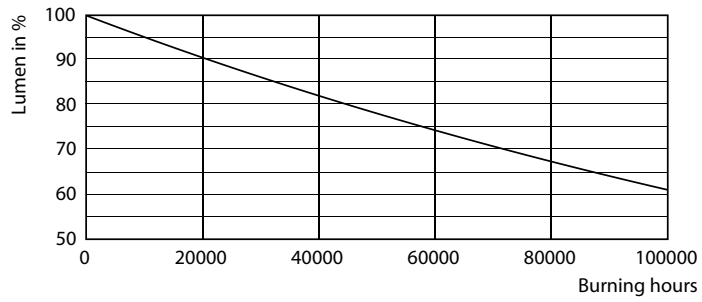


G13 4000K

G13 4000K

T8

Lifetime



G13 4000K

