



PL-L

16.5PL-L/COR/22-835/IF22/P/4P/DIM 10/1

Philips InstantFit LED lamps make the transition to LED from CFL lamps as simple as replacing a lamp. With a wide array of color temperatures, the InstantFit LED lamps can quickly and effectively replace compact fluorescent lamps.

Product data

General Information	
Cap-Base	2G11 [2G11]
EU RoHS compliant	Yes
Nominal Lifetime (Nom)	50000 h
Switching Cycle	50000X
Light Technical	
Color Code	835 [CCT of 3500K]
Beam Angle (Nom)	160 °
Luminous Flux (Nom)	2200 lm
Color Designation	White (WH)
Correlated Color Temperature (Nom)	3500 K
Luminous Efficacy (rated) (Nom)	133.00 lm/W
Color Consistency	<6
Color Rendering Index (Nom)	82
LLMF At End Of Nominal Lifetime (Nom)	70 %
Operating and Electrical	
Input Frequency	40000-160000 Hz
Power (Rated) (Nom)	16.5 W
Lamp Current (Max)	400 mA
Lamp Current (Min)	200 mA
Starting Time (Nom)	0.5 s
Warm Up Time to 60% Light (Nom)	0.5 s

UL Type	Type A - works on ballast
Power Factor (Nom)	0.9
Voltage (Nom)	70-110 V
Temperature	
T-Ambient (Max)	45 °C
T-Ambient (Min)	-20 °C
T-Storage (Max)	65 °C
T-Storage (Min)	-40 °C
T-Case Maximum (Nom)	75 °C
Controls and Dimming	
Dimmable	No
Mechanical and Housing	
Product Length	580 mm
Approval and Application	
Energy Efficiency Label (EEL)	Not applicable
Energy Saving Product	Yes
Approval Marks	UL certificate RoHS compliance DLC compliance
Energy Consumption kWh/1000 h	- kWh

PL-L

Energy Certifications	DLC Standard
Product Data	
Order product name	16.5PL-L/COR/22-835/IF22/P/4P/DIM 10/1
EAN/UPC - Product	046677532901
Order code	532903

Numerator - Quantity Per Pack	1
Numerator - Packs per outer box	10
Material Nr. (12NC)	929001893604
Net Weight (Piece)	0.170 kg

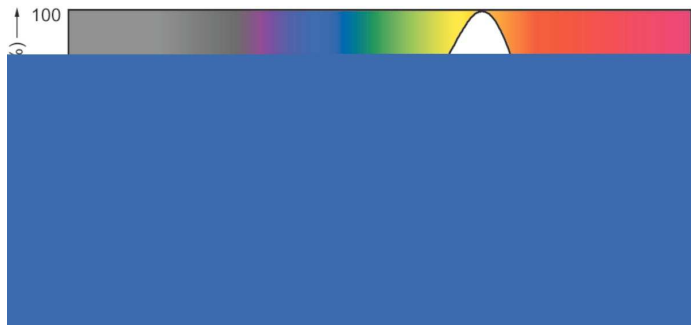
Dimensional drawing



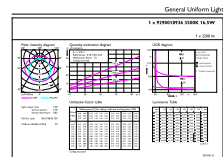
LED PLL MasterClass 2200lm 3500K

Product	D	D1	A1	A2	A3
16.5PL-L/COR/22-835/IF22/P/4P/DIM 10/1	40.6 mm	20 mm	501 mm	564 mm	570.6 mm

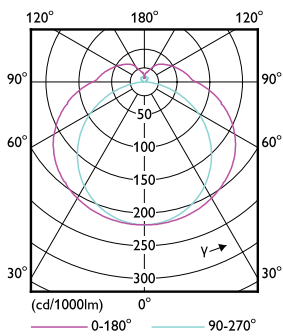
Photometric data



LEDtube 16.5 W, 835, G13, T8, UHO

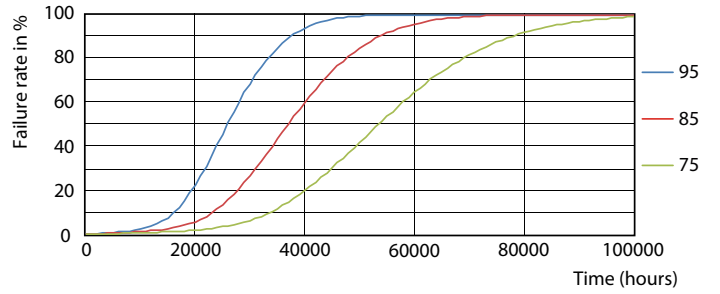
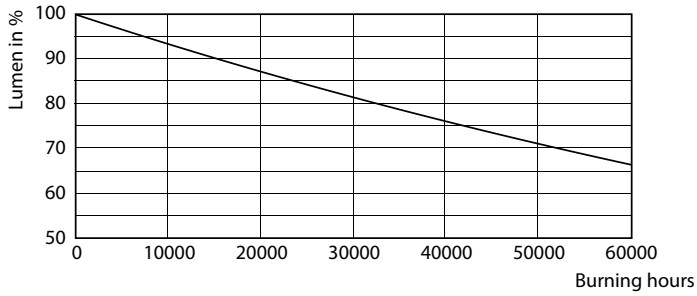


16-5W 2G11 835 3500K

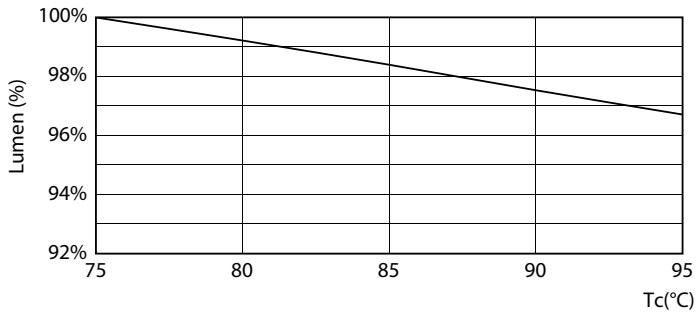


16-5W 2G11 830 3000K

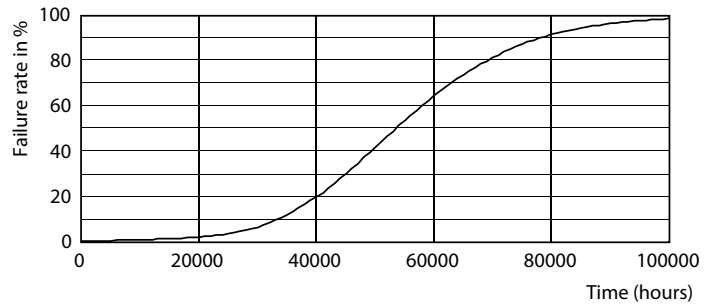
Lifetime



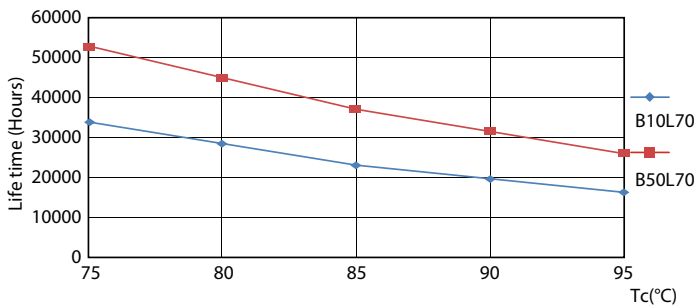
16-5W 2G11



16-5W 2G11



16-5W 2G11



16-5W 2G11

16-5W 2G11

