



T5

11T5HE/34-850/IF15/G/DIM 10/1

Philips T5 LED tubes offer an affordable, energy saving retrofit solution. The T5 lamps have been engineered to withstand the test of time with a 50,000-hour lifetime and a limited 5-year warranty to back it up. The lighting performance effectively replaces conventional fluorescent T5 HO or T5 HE lamps. Available in either InstantFit (Type A or Type C) or MainsFit (Type B / Ballast bypass), Philips T5 TLEDs provide a variety of options for any application.

Product data

General Information		Lamp Current (Min)	
Cap-Base	G5 [G5]		60 mA
EU RoHS compliant	Yes	Starting Time (Nom)	0.5 s
Nominal Lifetime (Nom)	50000 h	Warm Up Time to 60% Light (Nom)	0.5 s
Switching Cycle	50000X	UL Type	Type A - works on ballast
		Power Factor (Nom)	0.9
		Voltage (Nom)	50-80 V
Light Technical		Temperature	
Color Code	850 [CCT of 5000K]	T-Ambient (Max)	45 °C
Beam Angle (Nom)	200 °	T-Ambient (Min)	-20 °C
Luminous Flux (Nom)	1500 lm	T-Storage (Max)	65 °C
Color Designation	Daylight [Daylight]	T-Storage (Min)	-40 °C
Correlated Color Temperature (Nom)	5000 K	T-Case Maximum (Nom)	70 °C
Luminous Efficacy (rated) (Nom)	136.00 lm/W		
Color Consistency	<5	Controls and Dimming	
Color Rendering Index (Nom)	82	Dimmable	Yes
LLMF At End Of Nominal Lifetime (Nom)	70 %		
Operating and Electrical		Mechanical and Housing	
Input Frequency	40000-110000 Hz	Bulb Material	Glass
Power (Rated) (Nom)	11 W	Product Length	900 mm
Lamp Current (Max)	400 mA		

T5

Approval and Application

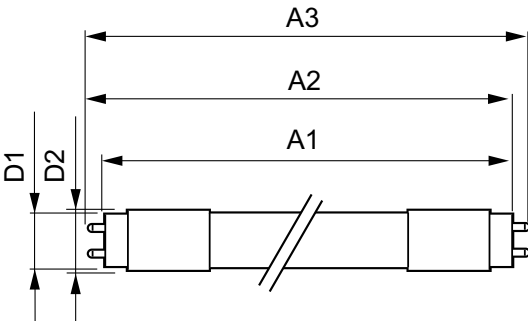
Energy Efficiency Label (EEL)	Not applicable
Energy Saving Product	Yes
Approval Marks	UL certificate RoHS compliance
Energy Consumption kWh/1000 h	- kWh

Product Data

Order product name	11T5HE/34-850/IF15/G/DIM 10/1
--------------------	-------------------------------

EAN/UPC - Product	046677476489
Order code	476481
Numerator - Quantity Per Pack	1
Numerator - Packs per outer box	10
Material Nr. (12NC)	929001823804
Net Weight (Piece)	0.110 kg

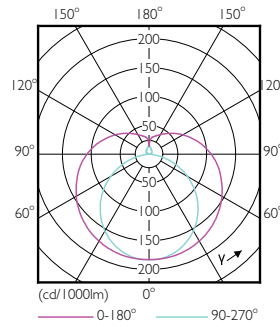
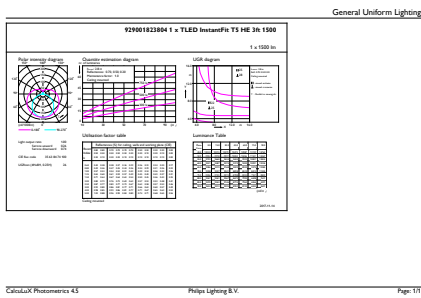
Dimensional drawing



TLED 900mm HFV11.5-21W 1500lm 5000K ND

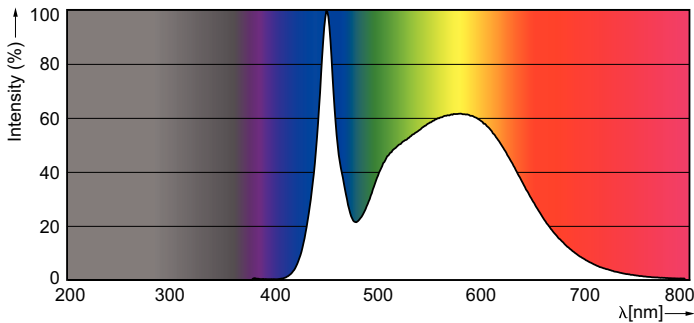
Product	D1	D2	A1	A2	A3
11T5HE/34-850/IF15/G/DIM 10/1	15.3 mm	18.4 mm	847.8 mm	854.9 mm	862 mm

Photometric data



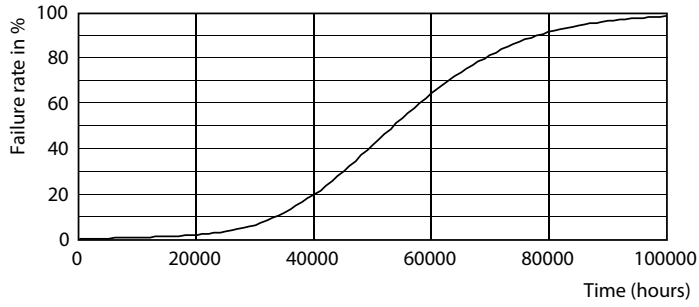
LEDtube 11W G5 850 200D DIM IF15

LEDtube 8W G5 830 200D DIM IF10

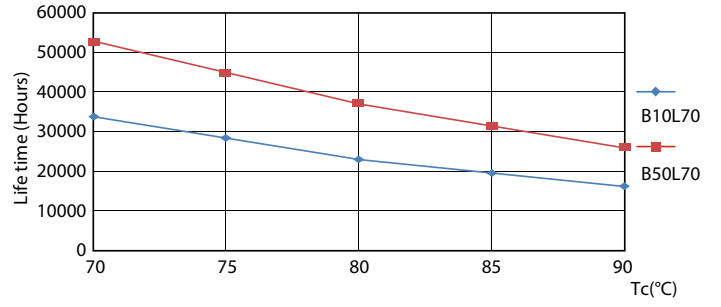


LEDtube 1200mm 12W G13/850

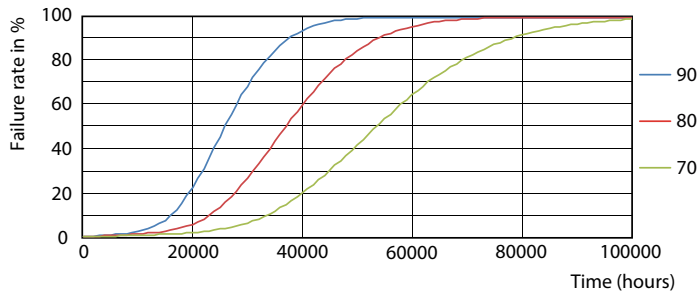
Lifetime



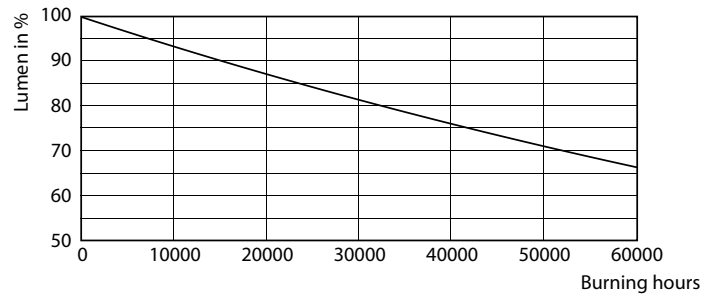
LEDtube 8-14W G5 830-850 200D DIM IF10-21



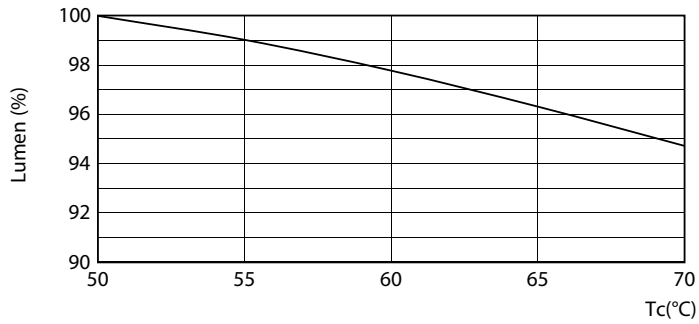
LEDtube 8-14W G5 830-850 200D DIM IF10-21



LEDtube 8-14W G5 830-850 200D DIM IF10-21



LEDtube 8-14W G5 830-850 200D DIM IF10-21



LEDtube 8-14W G5 830-850 200D DIM IF10-21

